



KILBIRNIE SCHOOL
EST. 1884
Whāia te iti kahurangi



TERM 4. WEEK 6.

Welcome to Elsa in Mrs. Patel's homeroom.

DATES FOR THE DIARY.

November.

Monday 20- pool open for student use.

Wednesday 22- Firewise ambassador visiting Ngake Hub.

Friday 24- Board survey closes.

Monday 27- Pool keys available to school whānau.

Thursday 30- Pack the bus (CARE values).

December.

Wednesday 6- Bring Your Own Device (BYOD) information evening. 6-7.30pm. Ngake celebration.

Thursday 7- Choosing Thursday ends.

Monday 11- Year 6 Leavers Dinner.

Thursday 14- Thank you morning tea for whānau. 10am. Certificate assembly. 2pm. Board meeting.

Friday 15- End of year summaries and portfolios home. New homeroom lists displayed. Year 6 cinema. Whātaimai celebration.

Monday 18- new homerooms meet. 9.30-10.30am.

Tuesday 19- Last day of term. Poroporoaki final assembly 12.30pm in hall. School closes at 1pm.

January.

Wednesday 31- welcome back to Kilbirnie School for 2024. Term 1, day 1.



EST. 1884
KILBIRNIE SCHOOL
Whāia te iti kahurangi

Important dates:

Monday November 20

Pool in use by students.

Monday November 27

Pool keys available for school whānau.

Monday December 4

Pool keys available for community.

Tuesday December 19

FINAL day for key availability.



We will again offer pool keys to members of our school community this summer. These will be available to parents of Kilbirnie School students through the school office from **Monday November 27th**. Any remaining keys will be available for members of the wider community to hire from **Monday December 4th**. Keys will not be available for hire after school closes at 1pm on **Tuesday December the 19th**. If you hired a key last season, please return this to the school office as soon as possible.

The costs for the season is \$90 with a \$10 refund when the key is returned. This fee contributes to the cost of running the pool. Very little money is available from the Ministry of Education for this purpose. The school covers other costs to allow the pool to operate for our students and the community.

Allowing the pool to be used by the school community is a year by year proposition for the school. Maintaining a pool committee with sufficient members is essential. In addition, we really must have a sense of community care and protection of the pool. We ask all users to adhere strictly to the conditions of use. These have been amended for this season and are provided to all key holders. Moreover, we ask users to actively encourage others to do the same. A culture of kaitiaki or shared protection of the redeveloped facility will make it more likely that the pool will be available for public use going forward.

If you notice people in the pool complex very late in the evening please call the police and report this trespass. The pool closes at 8pm each evening.



EST. 1884
KILBIRNIE SCHOOL
Whāia te iti kahurangi

- KILBIRNIE SCHOOL CARNIVAL.**



As I said, a terrific event last Friday following a massive build up. Acknowledgments again to **Parentlink and all their supporters.**

Thanks to **Dan, Anne and Ollie** from Spoonful for creating and delivering an exceptional menu at the Carnival. Spoonful-simply the finest catering company in Wellington.

SPOONFUL
CATERING



- **EASTERN ZONE ATHLETICS.**

Several weeks ago Mrs. Te Rito took our team of 35 athletes to Newtown Park to represent Kilbirnie School at the Eastern Zone athletics competition. We were proud of the support they offered each other and the efforts they made.

We are excited to announce that the following Kilbirnie School students will represent the Eastern Zone Primary Schools at the Interzone event next week. Their Eastern Zone result are also listed below.

Although they didn't qualify for the interzone event, we would like to acknowledge the achievement of the year 4 and year 6 girls relays teams that came second in the very competitive relay events.

- **Te Aroha - 1st Quoits**
- **Winston - 1st Vortex, 2nd 800m, 2nd short sprints**
- **Isla - 2nd long jump**
- **Maia - 2nd equal high jump, 3rd vortex**
- **Sana - 2nd 800m Kiara - 3rd long and short sprints, 3rd equal high jump**
- **Ashton - 3rd High jump**
- **Brannagh - 3rd short sprints**
- **Tom - 3rd vortex**





- **DRIVING AND PARKING AROUND THE SCHOOL.**

As our year 5 students complete their road patrol training with Aaron Dann from the New Zealand Police, this is an ideal time to remind whānau to drive and park carefully and legally near our school.

Many thanks to **Michelle, Daniel and now also Graham** who are our Whānau volunteers on the Kea crossing.

Also, for safety and also to be a good role-model for students:

1. **If you are entering or exiting the school from the Hamilton Road gate, please use the footpath under the waharoa (carving). Don't use the car park entrance.**
2. **If crossing Hamilton Road at a time when the students and adult supervisor are on duty- please use the crossing.**



ENROLMENTS.

Just a reminder about the pre-enrolment of new students. If you have a pre-school child that will be attending our school in the future, please do let the office know. This information is really useful for our planning.



EST. 1884
KILBIRNIE SCHOOL
Whāia te iti kahurangi

- **KILBIRNIE SCHOOL CARE VALUES- PACK THE BUS.** A message from Asha Patel.



To fit in with our value of Empathy in Term 4 Kilbirnie School will be participating in:

Pack the Bus Christmas Appeal on Thursday 30th November at 9.00am

By taking part, we can bring some Christmas cheer to those that need a little extra kindness during the holiday period. Students are invited to bring along an item or two from the list below and place their toy/product on the bus to help fill it.

Essential Items:

Cereals and spreads
Pasta and pasta sauce
Tinned fruit/tomatoes/fish/meat
Biscuits and crackers
Toiletries for the whole family
Baby food, wipes and nappies
Laundry powder and dishwashing liquid

Christmas Items:

Christmas cakes
Fancy biscuits/crackers
Christmas desserts e.g pavlova, meringues
Relishes/sauces/pickles
Roasted nuts/chippies
Chocolate
Retail vouchers

Toys: (new toys only please - and unwrapped)

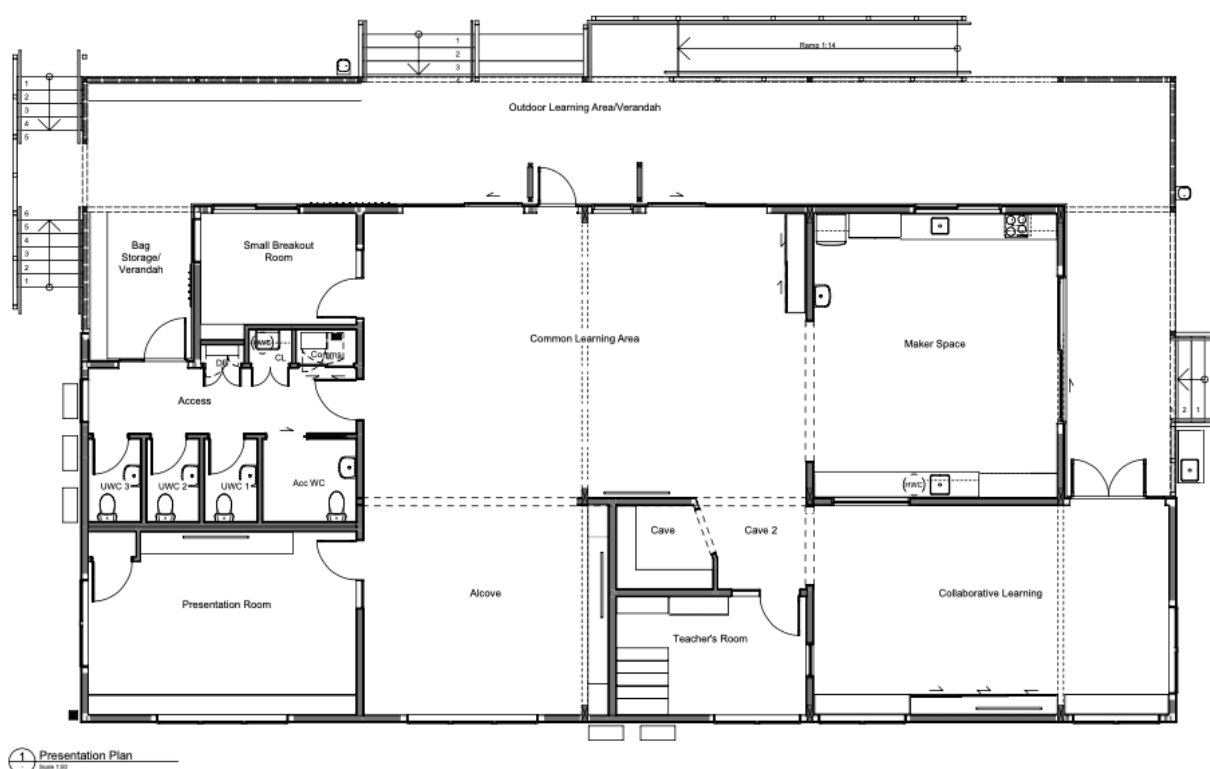
Construction Toys - Lego/Meccano/Blocks
Art equipment
Educational toys and books
Puzzles/Board games
Baby toys for 0-2 year olds
Diaries/Calendars
Sports equipment

Thank you in anticipation for your kind donations



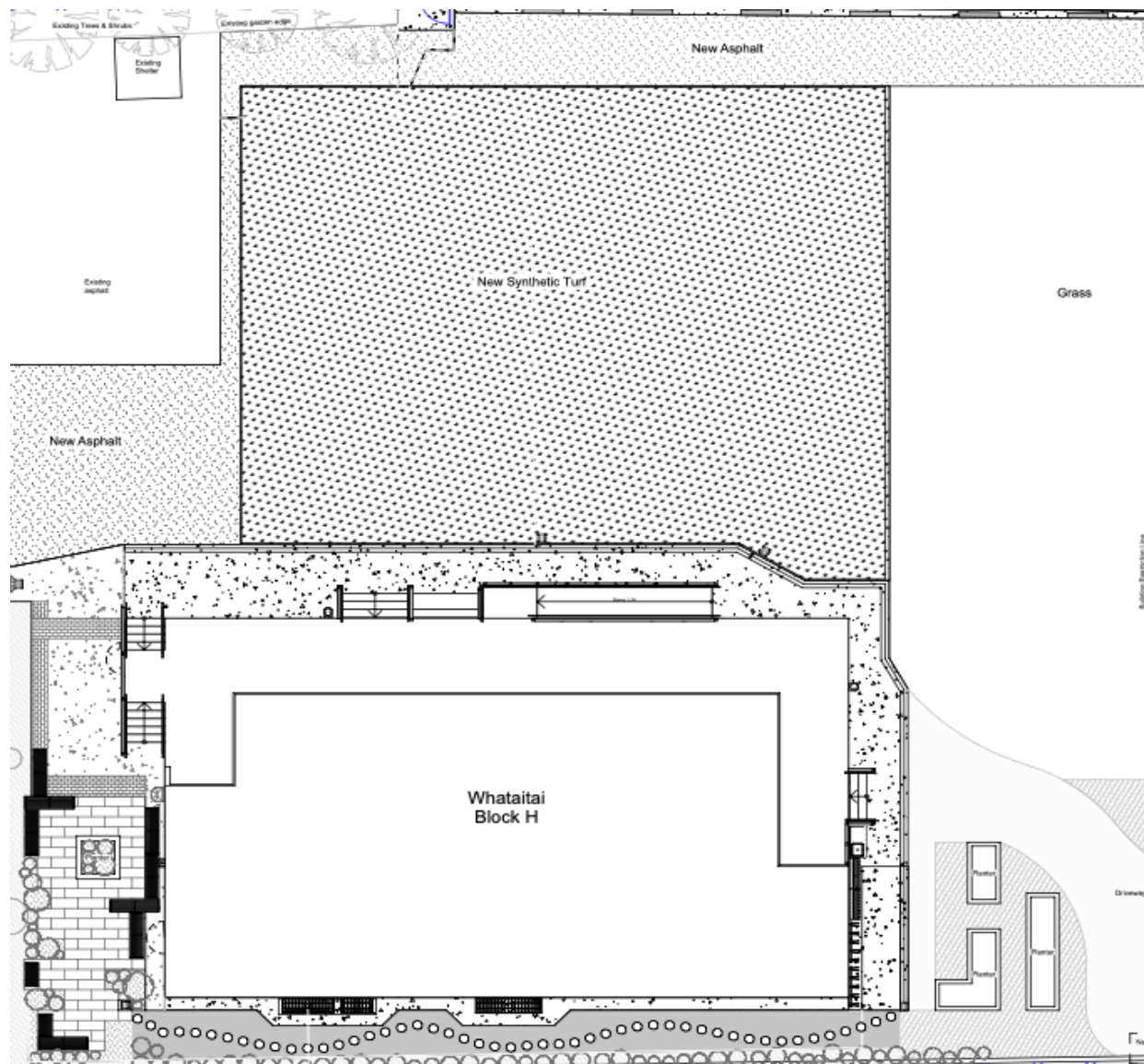
- NEW BUILDING- WHĀTAITAI HUB.**

The new Whātaimai Hub building is looking terrific, inside and out. Work on the surrounding outside areas is scheduled to start soon. We are making excellent progress toward an outstanding final outcome. The building and outside facilities will be used and enjoyed by all Kilbirnie School students. The finished project also represents a tremendous asset for use by our school community and whānau. I will provide a more detailed update in the next newsletter.





EST. 1884
KILBIRNIE SCHOOL
Whāia te iti kahurangi



LEGO BRICKS ORDERS!

LAST DAY
THIS MONDAY
NOVEMBER 20TH.



EST. 1884
KILBIRNIE SCHOOL
Whāia te iti kahurangi

- NEWS FROM OUR COMMUNITY.



Open Day



Sunday 10th December
10.00 am to 3.00 pm
at Worser Bay Boating Club

Come down to the club and find out about ideas to create a NZL Blue Belt site to help protect marine biodiversity and restore low stocks of marine life at Worser Bay. And while you are there you can have a go at snorkeling with the team from Mountains to Sea Wellington.





Open Day



Sunday 10th December, 10.00 am to 3.00 pm at Worser Bay Boating Club

Worser Bay Boating Club has been working with schools in the Eastern Suburbs, the NZ Marine Studies Centre, and Mountains to Sea Wellington to establish a NZL Blue Belt Site at Worser Bay. Students have been trialing a set of tools and techniques to monitor ocean health and have been working on a set of ideas to restore marine ecosystems at Worser Bay.



Ocean Health Monitoring

Find out about the tools that students are using to monitor ocean health at Worser Bay.



Restoring ecosystems

Find out about projects such as the penguin hotel, the Love Rimurimu seaweed nursery, the anemone garden, and the paua hatchery.

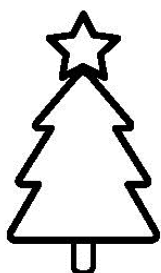


Have a go at snorkeling

Bring your togs and towel and have a go snorkeling with the Mountains to Sea team - remember to arrive early as spaces fill fast! Wetsuit and all other gear provided.

We'd like to thank the following organisations who are supporting Worser Bay Boating Club and the schools in the Eastern Suburbs to establish a NZL Blue Belt site, and have helped make the open day possible.





KIDS CHRISTMAS BAKING CLASSES



WITH SARAH HALEWOOD

Perfect for kids age 10 to 14

Drop your kids off to do some Christmas baking while you shop or simply enjoy some quiet time. They will bake, decorate and package up a range of delicious Christmas treats, perfect for gifting to friends and family. Each child will bring home 6 packaged gifts, containing a selection of goodies.

DETAILS

Sunday 10th December 10am - 1pm \$125

On the menu:

Spiced Christmas Biscuits

Rocky Road

Raspberry Jam

Saturday 16th December: 10am 1pm \$125

On the menu:

Pinwheel Biscuits

Chocolate Truffles

Marmalade

WHERE

Prefab Hall - 14 Jessie Street Te Aro

TO BOOK EMAIL

sarahhalewood8@gmail.com

If your child loves doing cartwheels, handstands, trampolining, flips, dancing, or parkour, then they will thrive at Bigair Gym! Bigair Gym classes are excellent for fun, focus and fitness! Children learn new skills and develop personal confidence and self-achievement! Strong focus is given to safety and technique, ranging from fundamentals to advanced skills. The structured classes follow a Bigair Badge Programme, which creates focused learning, and allows children to achieve and feel personal progression! Bigair classes include **GYMNASTICS, TRAMPOLINING, TUMBLING, FREE RUNNING**(thats parkour with flips) & **CHEERLEADING!** Inquire about Bigair **BIRTHDAY PARTIES** too!

GET IN QUICK FOR TERM 4 GYM CLASSES! Book NOW. Book online at www.bigairgym.co.nz or contact your local Bigair Gym office today.

Bigair Gymsports Kapiti ph. 297 0400 e. kapiti@bigairgym.co.nz

Bigair Gym Owhiro Bay ph. 383 8779 e. wgt@bigairgym.co.nz

Bigair Gym Tawa ph. 232 3508 e. office@bigairgym.co.nz

HOMESTAY HOST FAMILIES NEEDED

Wellington East Girls' College is needing new host families for some of our international students. These students come from many different countries and stay for varying lengths of time - from one term to a full year. Each host family is paid for the care they provide. The fee paid in 2024 will be \$340 per week. Some of these funds are tax exempt - we can share the link to the Inland Revenue website with you. In exchange for the hosting fee a family will provide:

- A warm and comfortable bedroom
- Three meals a day
- Kind and friendly family engagement

Wellington East Girls' College has ultimate responsibility for each student with a department of three staff who ensure each student is motivated and well supported at school. We provide a great level of care for each host family with information, guidance and ongoing communication.

We are very happy to provide all of the information you may need in order to make a decision about hosting a Wellington East Girls' College international student. We would love to hear from you - international@wegc.school.nz - we check this email every day



ST CATHERINE'S COLLEGE
KILBIRNIE WELLINGTON

International Student Homestays Wanted

St Catherine's College is now accepting your applications to become a host for our international students in 2024.

As a host family, you will have the opportunity to show young people our local culture and lifestyle, and get to learn about other cultures at the same time.



If you have a spare room in your house with a bed and desk, and are interested in becoming a host, please contact:

international@stcatherinescollege.school.nz

For more information.
We would love to hear from you!