



KILBIRNIE SCHOOL
Whāia te iti kahurangi
EST. 1884



TERM 4. WEEK 4.

Welcome to Humaira and Hunter in
Mrs. Patel's homeroom.

DATES FOR THE DIARY.

November.

Thursday 9- Choosing Thursday starts.

Friday 10- Kilbirnie School Carnival.

**Thursday 16- Assembly in school hall-
2.15pm.**

Monday 20- pool open for student use.

**Wednesday 29- Bring Your Own Device
(BYOD) session for year 4 parents and
offer interested whānau.**

**Thursday 30- Pack the bus (CARE
values).**

December.

Thursday 7- Choosing Thursday ends.

ENROLMENTS.

Just a reminder about the pre-enrolment of new students. If you have a pre-school child that will be attending our school in the future, please do let the office know. This information is really useful for our planning.

PRINCIPAL NEWS.

Kia ora koutou,

I would like to announce the retirement from full time work of **Alison Tannock**. Alison is a skilled professional and much loved member of our whānau. There are no other changes to our wonderful team of teachers for the start of 2024.

In the **Ngake Hub**, **Juliet and Molly** will work with year 1 and 2 learners while **Asha** will start with our newest students. As usual, some of these students may move though to **Juliet and Molly** when they demonstrate that this is needed. **Rachel and Denise** will work part time in Ngake.

Glenys, Elaine and Tina will operate the **Whātaimai Hub** in the new building with two homerooms working with year 2 and 3 learners.

Our 2024 year 6 group is half the size of a normal Kilbirnie School year group. This is a significant anomaly. **Lou** is going to have all the year 6 students together in her homeroom next year along with some year 5 students. **Soazik, Peter (with Katrina)** will work with year 4 and 5 composite homerooms. **Matairangi Hub** students will continue to work across all rooms and all teachers depending on needs and the learning taking place.

Ngā mihi.

Tony Austin- Principal.



- **KILBIRNIE SCHOOL SWIMMING POOL.**

We will again offer pool keys to members of our school community this summer. These will be available to parents of Kilbirnie School students through the school office from **Monday November 27th**. Any remaining keys will be available for members of the wider community to hire from **Monday December 4th**. Keys will not be available for hire after school closes at 1pm on **Tuesday December the 19th**. If you hired a key last season, please return this to the school office as soon as possible.

The costs for the season is \$90 with a \$10 refund when the key is returned. This fee contributes to the cost of running the pool. Very little money is available from the Ministry of Education for this purpose. The school covers other costs to allow the pool to operate for our students and the community.

Allowing the pool to be used by the school community is a year by year proposition for the school. Maintaining a pool committee with sufficient members is essential. In addition, we really must have a sense of community care and protection of the pool. We ask all users to adhere strictly to the conditions of use. These have been amended for this season and are provided to all key holders. Moreover, we ask users to actively encourage others to do the same. A culture of kaitiaki or shared protection of the redeveloped facility will make it more likely that the pool will be available for public use going forward.

If you notice people in the pool complex very late in the evening please call the police and report this trespass. The pool closes at 8pm each evening.



THE ORIGINAL DIGGING OUT OF THE POOL. CIRCA 1950.



-
- HAMILTON
Hataitai
- 4.30-7pm
- FRIDAY
10th NOVEMBER
- KILBIRNIE
School
- FAMILY



EST. 1884
KILBIRNIE SCHOOL
Whāia te iti kahurangi

- WHĀTAITAI BUILDING REPLACEMENT- OUTSIDE SPACES FUNDRAISER.

ORDERS CLOSE NEXT FRIDAY NOVEMBER 10TH.

The clay and Lego brick fund raising projects will be finishing soon to allow the bricks to be engraved. The clay bricks will be set into the paved area on the West side of the building.

Isobel is holding examples of the Lego bricks. The section of wall in the main shared space of the new building will house the Lego panel. This will be visible from the entrance to the building and can be viewed by students now and into the future including once they have left Kilbirnie School.

If you have any questions about these projects, please see the website or give Carolina in the office a call. Click [HERE](#) for order forms and FAQs.





EST. 1884
KILBIRNIE SCHOOL
Whāia te iti kahurangi

Cement Your Support > **BUY A BRICK**

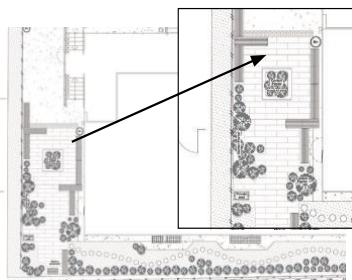
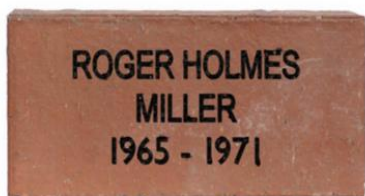
Notice our School under construction? We're transforming the surroundings of the new building into outdoor learning and socializing areas for students and whānau. The West and East sides offer great potential for outdoor learning and inviting communal spaces. To finance these initiatives, we've created two community opportunities.

1. Engraved red clay bricks in the outdoor area paving.
2. Engraved Lego bricks as part of a wall inside.

By purchasing a named engraved brick in the Kilbirnie School WHĀTAITAI Walkway (pictured below), you can both support future students, and also create a very special permanent legacy on the school grounds for you, your child(ren) and their whānau to return to now, and for generations to come.

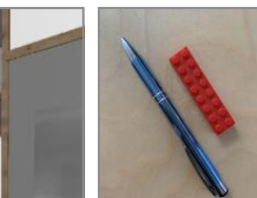
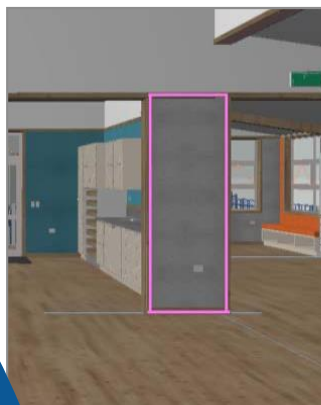
Current and past students, parents and all whānau across the country and world, supporters of Kilbirnie School, organisations and of course all local businesses are invited.

Engrave your name here...



BUY A LEGO BRICK

We are going to build a Lego wall inside the new building. The wall below (with the pink border) has been identified by the architect for the framed display of individual 8x2 Lego bricks which will be engraved. See below for examples.



Details...

Clay Brick / **\$150**
tax deductible.

Maximum of 3 lines,
16 characters including
spaces on each line.
Can purchase multiple.

Lego Brick / **\$35**
tax deductible
4mm x 9mm x 15mm.

Maximum of 20
characters including
spaces, one line.
Can purchase multiple.

To order, please fill out
an order form available
from office or via email.

For more details and
FAQ's see Kilbirnie.
school.nz

Any queries please
email [office@kilbirnie.
school.nz](mailto:office@kilbirnie.school.nz)



- **WELCOME TO KŌHINE. A NEW KILBIRNIE SCHOOL KOROWAI.**

We enjoyed a very special Mihi Whakatau (welcome to new students and whānau) last week. **Rachel** and I were delighted with the energy and passion of our kapa haka group who led the event. The event was made even more special as we were gifted a new Korowai entitled **Kōhine**. We would like to thank sincerely **Nan Walden** for creating and gifting this taonga to Kilbirnie School. Nan had previously created and gifted the Korowai **Whātaimai** to Kilbirnie School. **Kōhine** is to be worn by a female kapa haka leader. **Katie** wore Kōhine during the mihi whakatau.





- EASTERN ZONE ATHLETICS.**

Mrs. Te Rito took our team of 35 athletes to Newtown Park on Wednesday to represent Kilbirnie School at the Eastern Zone athletics competition.

We are proud of the support they offered each other and the efforts they made. There were also some terrific achievements. Results will be available next week, we will update you in the next newsletter.





- LIFE EDUCATION CARAVAN- WELCOME HAROLD!**

A pleasure to have the caravan back at Kilbirnie School as part of our health curriculum.



"We finally got to meet Harold, he tells funny jokes! Our favourite thing was having the dance party with the rainbow disco lights"

"I love it in the caravan and we learned a lot"

"I remember the caravan from when I was in the Ngake Hub. It was cool to be back in there as a senior. We actually learned heaps".



• KILBIRNIE SCHOOL POLICIES AND PROCEDURES.

At Kilbirnie School we hold our Policies and Procedures online with **schooldocs.co.nz**. We follow a schedule of review which takes feedback from the School Board, staff, and school whānau depending on the policy being reviewed. The Board reviews collated feedback and policies are updated as required. We welcome feedback on:

- Curriculum and Student Achievement Policy.
- Distance Learning.
- Home Learning.
- Religious Instruction.
- Health Education.

Follow these instructions if you would like to participate in Kilbirnie School policy review:

1. Visit the Kilbirnie School website.
2. Go to the “About Us” tab and select “Policies and Procedures”. Note the username and password. Click to enter the Kilbirnie School, “School Docs” site.
3. Click the “Current Review” button at the top of the page.
4. Click on the policy and read it.
5. Click the Blue “Start your review” tab at the top of the page.
6. Select the reviewer type as Whānau- eg. parent, community member.
7. Enter your name (optional).
8. Accept the privacy statement.
9. Complete the review.



EST. 1884
KILBIRNIE SCHOOL
Whāia te iti kahurangi

• **NEWS FROM OUR COMMUNITY.**



KIDS CHRISTMAS BAKING CLASSES



WITH SARAH HALEWOOD

Perfect for kids age 10 to 14

Drop your kids off to do some Christmas baking while you shop or simply enjoy some quiet time. They will bake, decorate and package up a range of delicious Christmas treats, perfect for gifting to friends and family. Each child will bring home 6 packaged gifts, containing a selection of goodies.

DETAILS

Sunday 10th December 10am - 1pm \$125

On the menu:

Spiced Christmas Biscuits

Rocky Road

Raspberry Jam

Saturday 16th December: 10am 1pm \$125

On the menu:

Pinwheel Biscuits

Chocolate Truffles

Marmalade

WHERE

Prefab Hall - 14 Jessie Street Te Aro

TO BOOK EMAIL

sarahhalewood8@gmail.com

If your child loves doing cartwheels, handstands, trampolining, flips, dancing, or parkour, then they will thrive at Bigair Gym! Bigair Gym classes are excellent for fun, focus and fitness! Children learn new skills and develop personal confidence and self-achievement! Strong focus is given to safety and technique, ranging from fundamentals to advanced skills. The structured classes follow a Bigair Badge Programme, which creates focused learning, and allows children to achieve and feel personal progression! Bigair classes include **GYMNASTICS, TRAMPOLINING, TUMBLING, FREE RUNNING**(thats parkour with flips) & **CHEERLEADING!** Inquire about Bigair **BIRTHDAY PARTIES** too!

GET IN QUICK FOR TERM 4 GYM CLASSES! Book NOW. Book online at www.bigairgym.co.nz or contact your local Bigair Gym office today.

Bigair Gymsports Kapiti ph. 297 0400 e. kapiti@bigairgym.co.nz

Bigair Gym Owhiro Bay ph. 383 8779 e. wgt@bigairgym.co.nz

Bigair Gym Tawa ph. 232 3508 e. office@bigairgym.co.nz



COMMUNITY FAIR

SATURDAY 4 NOV
10AM - 2PM

FOOD & DRINK
STALLS, PRIZES
ACTIVITIES (5-12YRS)
BOUNCY CASTLE
SILENT AUCTION
PRESCHOOL AREA

Solve the
KEA ADVENTURE!
Fun Day for ALL

FREE
ENTRANCE

HOSTED AT
MIRAMAR CHRISTIAN SCHOOL
41 Camperdown Rd, Miramar
Email: youth@gatewaybaptist.org.nz

Brought to you by...

MIRAMAR CHRISTIAN SCHOOL

GATEWAY BAPTIST CHURCH

THE SUNDAY HUB



SoundsWell Singers

in association with EBIS present Peaceful
Voices : Building Connections
Fundraising concert
2 pm Saturday, October 28th, 2023
Evans Bay Intermediate School
14A Kemp Street, Kilbirnie, Wellington

Parking available onsite

Adults \$15
Concession \$10
15 and under \$5
Under 5's free

Raffles are available on the day. Afternoon tea available following the concert, by Koha. Please feel free to join us!

Contact emails: meganrmth@gmail.com or pennywarren@gmail.com

HOMESTAY HOST FAMILIES NEEDED

Wellington East Girls' College is needing new host families for some of our international students. These students come from many different countries and stay for varying lengths of time - from one term to a full year.

Each host family is paid for the care they provide. The fee paid in 2024 will be \$340 per week. Some of these funds are tax exempt - we can share the link to the Inland Revenue website with you. In exchange for the hosting fee a family will provide:

- A warm and comfortable bedroom
- Three meals a day
- Kind and friendly family engagement

Wellington East Girls' College has ultimate responsibility for each student with a department of three staff who ensure each student is motivated and well supported at school. We provide a great level of care for each host family with information, guidance and ongoing communication.

We are very happy to provide all of the information you may need in order to make a decision about hosting a Wellington East Girls' College international student. We would love to hear from you - international@wegc.school.nz - we check this email every day



ST CATHERINE'S COLLEGE
KILBIRNIE WELLINGTON

International Student Homestays Wanted

St Catherine's College is now accepting your applications to become a host for our international students in 2024.

As a host family, you will have the opportunity to show young people our local culture and lifestyle, and get to learn about other cultures at the same time.



If you have a spare room in your house with a bed and desk, and are interested in becoming a host, please contact:

international@stcatherinescollege.school.nz

For more information.
We would love to hear from you!



GKRKARATE
KARATE FOR EVERYONE

You are invited to attend a **FREE TRIAL CLASS.**

**This will give you a excellent introduction into the self defence
and safety awareness benefits of karate training. Beginner kids
5+, teens and adults are all welcome.**

Choose your free trial from these classes and dates



**Monday
30th October
Holy Cross
School Hall,
119 Miramar Avenue
5.30-6.30pm**



**Wednesday
1st November
Holy Cross
School Hall,
119 Miramar Avenue
6.00-7.00pm**



**Monday
6th November
Holy Cross
School Hall,
119 Miramar Avenue
5.30-6.30pm**



**Wednesday
8th November
Holy Cross
School Hall,
119 Miramar Avenue
6.00-7.00pm**

**To book in, simply
scan the QR code or
call. Looking forward
to seeing you there.**



Sensei Anthony

Instructor and
Consultant,
GKR Wellington

M: 027 765 3935

