



KILBIRNIE SCHOOL
EST. 1884
Whāia te iti kahurangi



TERM 4. WEEK 2.

Welcome to Chooi, Devu, Nannu, Chanelle and Riley in Mrs. Patel's homeroom.
Welcome to Sahana in Juliet's homeroom.
Welcome to Rylynn in Soazik's homeroom.

DATES FOR THE DIARY.

October.

Monday 23- School closed. Labour Day holiday.

Tuesday 24- School closed. Teacher Only Day.

Thursday 26- Mihi whakatau.

Monday 30- Life Education (Harold) caravan at school this week.

November.

Wednesday 1- Eastern Zone athletics.

Thursday 2- Assembly in school hall- 2.15pm.

Thursday 9- Choosing Thursday starts.

Friday 10- Kilbirnie School Carnival.

Thursday 16- Assembly in school hall- 2.15pm.

Monday 20- pool open for student use.

Thursday 30- Pack the bus (CARE values).

ENROLMENTS.

Just a reminder about the pre-enrolment of new students. If you have a pre-school child that will be attending our school in the future, please do let the office know. This information is really useful for our planning.

KILBIRNIE SCHOOL SWIMMING POOL

Yes- pool keys will be available again this summer. More information and dates in the next newsletter.

KILBIRNIE SCHOOL CARNIVAL.

Thanks to Parentlink, it's back for 2023- see the poster below and put this date in your calendar. This is a school and community event not to be missed.



EST. 1884
KILBIRNIE SCHOOL
Whāia te iti kahurangi

- KILBIRNIE SCHOOL CARNIVAL.





EST. 1884
KILBIRNIE SCHOOL
Whāia te iti kahurangi

- WHĀTAITAI BUILDING REPLACEMENT- OUTSIDE SPACES FUNDRAISER.

ORDERS CLOSING SOON.

The clay and Lego brick fund raising projects will be finishing soon to allow the bricks to be engraved. The clay bricks will be set into the paved area on the West side of the building.

Isobel is holding examples of the Lego bricks. The section of wall in the main shared space of the new building will house the Lego panel. This will be visible from the entrance to the building and can be viewed by students now and into the future including once they have left Kilbirnie School.

If you have any questions about these projects, please see the website or give Carolina in the office a call. Click [HERE](#) for order forms and FAQs.





EST. 1884
KILBIRNIE SCHOOL
Whāia te iti kahurangi

Cement Your Support > **BUY A BRICK**

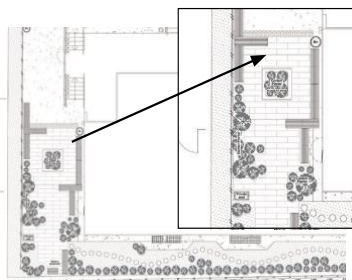
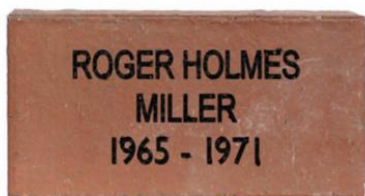
Notice our School under construction? We're transforming the surroundings of the new building into outdoor learning and socializing areas for students and whānau. The West and East sides offer great potential for outdoor learning and inviting communal spaces. To finance these initiatives, we've created two community opportunities.

1. Engraved red clay bricks in the outdoor area paving.
2. Engraved Lego bricks as part of a wall inside.

By purchasing a named engraved brick in the Kilbirnie School WHĀTAITAI Walkway (pictured below), you can both support future students, and also create a very special permanent legacy on the school grounds for you, your child(ren) and their whānau to return to now, and for generations to come.

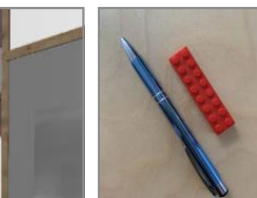
Current and past students, parents and all whānau across the country and world, supporters of Kilbirnie School, organisations and of course all local businesses are invited.

Engrave your name here...



BUY A LEGO BRICK

We are going to build a Lego wall inside the new building. The wall below (with the pink border) has been identified by the architect for the framed display of individual 8x2 Lego bricks which will be engraved. See below for examples.



Details...

Clay Brick / **\$150**
tax deductible.

Maximum of 3 lines,
16 characters including
spaces on each line.
Can purchase multiple.

Lego Brick / **\$35**
tax deductible
4mm x 9mm x 15mm.

Maximum of 20
characters including
spaces, one line.
Can purchase multiple.

To order, please fill out
an order form available
from office or via email.

For more details and
FAQ's see Kilbirnie.
school.nz

Any queries please
email [office@kilbirnie.
school.nz](mailto:office@kilbirnie.school.nz)



EST. 1884
KILBIRNIE SCHOOL
Whāia te iti kahurangi

- **ATHLETICS SPORTS DAY.**

What a wonderful day at Newtown Park yesterday! Thanks to the parents and whānau who attended on the day to help make the event so enjoyable for the students. **Mrs. Te Rito** and I were particularly impressed to see and hear students supporting and encouraging each other.





EST. 1884
KILBIRNIE SCHOOL
Whāia te iti kahurangi





- **GOVERNMENT HOUSE.**

Last week **Elaine** organised for four students to have the opportunity to visit Government house. This is related to our Garden to Table programme. **Greer, Hsa Gay K Paw, Jake and Aysha** wrote about the experience.

Last Friday we were lucky to visit Government House to plant a pollinator path. This is a pathway that will lead from schools in our area all the way to Government House. It included plants like basil, thyme, mint, and wildflowers. There were other schools also there, Island Bay Kindergarten, Hataitai, St. Marks and Newtown, We got to meet The Right Honourable Dr Richard Davies who gardened with us and showed us the trees that had been planted by the late Queen and her husband and which was her favourite part of the garden. Dr Davies was our tour guide with his dogs Pebbles and Lucy,

When we finished we got to walk around some of Government House and had a wonderful Picnic that was grown in the gardens. We ate- egg sandwiches, carrot cake, asparagus, carrots, honey roasted nuts, lettuce, kumara chips and had a fizzy elderflower drink. We had a wonderful time.





EST. 1884
KILBIRNIE SCHOOL
Whāia te iti kahurangi

• NEWS FROM OUR COMMUNITY.

If your child loves doing cartwheels, handstands, trampolining, flips, dancing, or parkour, then they will thrive at Bigair Gym! Bigair Gym classes are excellent for fun, focus and fitness! Children learn new skills and develop personal confidence and self-achievement! Strong focus is given to safety and technique, ranging from fundamentals to advanced skills. The structured classes follow a Bigair Badge Programme, which creates focused learning, and allows children to achieve and feel personal progression! Bigair classes include **GYMNASTICS, TRAMPOLINING, TUMBLING, FREE RUNNING**(thats parkour with flips) & **CHEERLEADING!** Inquire about Bigair **BIRTHDAY PARTIES** too!

GET IN QUICK FOR TERM 4 GYM CLASSES! Book NOW. Book online at www.bigairgym.co.nz or contact your local Bigair Gym office today.

Bigair Gymsports Kapiti ph. 297 0400 e. kapiti@bigairgym.co.nz

Bigair Gym Owhiro Bay ph. 383 8779 e. wgtm@bigairgym.co.nz

Bigair Gym Tawa ph. 232 3508 e. office@bigairgym.co.nz

COMMUNITY FAIR

SATURDAY 4 NOV
10AM - 2PM

FOOD & DRINK
STALLS, PRIZES
ACTIVITIES (5-12YRS)
BOUNCY CASTLE
SILENT AUCTION
PRESCHOOL AREA

Solve the
KEA ADVENTURE!
Fun Day for ALL

FREE ENTRANCE

HOSTED AT
MIRAMAR CHRISTIAN SCHOOL
41 Camperdown Rd, Miramar
Email: youth@gatewaybaptist.org.nz

Brought to you by...

MIRAMAR CHRISTIAN SCHOOL
GATEWAY BAPTIST CHURCH
THE GATEWAY BAPTIST CHURCH

SoundsWell Singers

in association with EBIS present Peaceful
Voices : Building Connections
Fundraising concert
2 pm Saturday, October 28th, 2023
Evans Bay Intermediate School
14A Kemp Street, Kilbirnie, Wellington

Parking available onsite

Adults \$15
Concession \$10
15 and under \$5
Under 5's free

Raffles are available on the day. Afternoon tea available following the concert, by Koha. Please feel free to join us!

Contact emails: meganrmth@gmail.com or pennywarren@gmail.com