



KILBIRNIE SCHOOL
Whāia te iti kahurangi

EST. 1884



TERM 3. WEEK 6.

EXHIBITION
OF VISUAL ART CREATED BY THE
STUDENTS OF KILBIRNIE SCHOOL

SAT. 16 SEPT
10AM - 1PM

MON. 18 SEPT
8.30AM - 4PM

KILBIRNIE SCHOOL HALL

ART TE AROHĀ

TE MAHI A NGA TAMARIKI



CLASS PIECE
SILENT AUCTIONS

STARTING:
8.30AM TUES
12TH SEPT 2023

CLOSING:
3.30PM TUES
19TH SEPT 2023

PHONE BIDS ARE WELCOME

RECEPTION FOYER

**FREE
ENTRY**

NAU MAI HAERE MAI!

Koha (donation) box available within the exhibition



EST. 1884
KILBIRNIE SCHOOL
Whāia te iti kahurangi

Lets get 
QUIZZICAL

KILBIRNIE SCHOOL QUIZ NIGHT

FRIDAY  **15 SEPT 23**

AT AXEMEN CLUBROOMS  **HATAITAI PARK**

[\$25 PP] INCLUDES ENTRY & LIGHT SUPPER

PURCHASE TICKETS FROM THE OFFICE

Gather your friends & family to form a team of 6-10ppl, or if you're flying solo, no worries - we'll team you up with other enthusiastic individuals.

Prepare for a night of brain-teasing questions, laughter, and friendly competition as we come together to support Kilbirnie School.

The Axemen Clubrooms open from 6.30pm - quiz starting at 7.30pm.

LIVE AUCTION - CASH BAR [EFTPOS AVAIL] - 18+ EVENT - CATERING BY SPOONFUL



Welcome to Athena, Daniel, Locky in Mrs. Patel's Homeroom.
Welcome to Thao and Phuc in Juliet's Homeroom.
Welcome to Dat and Dang in Mr Dobson and Mrs. Te Rito's Homeroom.

DATES FOR THE DIARY.

August.

- **Thursday 31- school photo day.**

September.

- **Thursday 7- school hui (assembly) and Board meeting 7pm.**
- **Monday 11- Art splash choir- concert.**
- **Friday 15- Parentlink Quiz Night.**
- **Saturday 16- Art Te Aroha- exhibition of student work in school hall. 10.00am- 1.00pm.**
- **Monday 18- Art Te Aroha- exhibition of student work in school hall. 8.30am- 4.00pm.**
- **Wednesday 20- Eastern Zone floorball.**
- **Friday 22- Last day of term 3.**

October.

- **Monday 9- First day of term 4. Brimmed hats now required.**
- **Saturday 14- Kilbirnie School Hall used as polling location.**
- **Thursday 19- School athletics at Newtown Park.**
- **Monday 23- School closed. Labour Day holiday.**
- **Tuesday 24- School closed. Teacher Only Day.**

PRINCIPAL NEWS.

In earlier newsletters we mentioned the **Better Start Literacy Approach** professional learning and development being undertaken by teachers in the Ngake and Whataitai hubs this year. We are currently evaluating this programme and seeing excellent outcomes. Our work on this structured literacy approach will continue into next year. Teachers shared some of this information during the recent conferences.

I would like to congratulate **Asha, Juliet, Molly, Elaine and Glenys** who recently achieved a micro-credential qualification through the University of Canterbury as part of this work.

Ngā mihi ki nga kaiako!

ENROLMENTS.

Just a reminder about the pre-enrolment of new students. If you have a pre-school child that will be attending our school in the future, please do let the office know. This information is useful for our planning.



EST. 1884
KILBIRNIE SCHOOL
Whāia te iti kahurangi

- **KILBIRNIE SCHOOL- ART TE AROHA 2023**

Our bi-annual celebration of the visual arts involves every child and is called **Art te Aroha**. This year we are not showing professional art, our exhibition of will work from every student at our school and is open:

Saturday September 16th- 10am- 1pm

Monday September 18th- 8.30am- 4pm.

All art will be sent home following the exhibition.

- **HOMEROOM COLLOBORATIVE PIECES.**

Each class will develop a **collaborative piece** with will be auctioned by Parentlink. These will be on display outside our reception from **Tuesday September 12th**.

- **CALENDAR ART.**

Students have also produced a lovely piece for the very popular **Calendar Art**. These will be available earlier than usual this year. More information to come on these!

- **SPOONFUL.**

I would like to acknowledge Kilbirnie School parent **Dan** and the team from Spoonful catering. This outstanding local provider of catering services is a friend and supporter of Kilbirnie School.



- **INVITATION TO OTHER BUSINESSES.**

If you know of a business that would like to partner with us or provide sponsorship around one of the projects, we are doing around the new building please get in touch with me.



- **WHĀTAITAI BUILDING REPLACEMENT- OUTSIDE SPACES FUNDRASIER.**

Thank you for the support with this. We are working very hard to generate funding for the different projects in the areas around the building which have evolved as the project has evolved over the year to date.

We hope to share an image of the current plan next week. Features of this latest iteration feature additional garden and planting work, more seating and an artificial all weather sports surface playing area which has doubled in size while retaining a natural grass lawn area.

The clay and Lego bricks will be available until **October** unless sold out before that. Our fundraising target is \$25 000 including funds from the many different grants we have applied to.



The prototypes of the engraved Lego have arrived. Thanks **Isobel** for displaying these. Also thanks to school parent **Paul from Mayer and Toye** who is supporting us with this project.



M&T
MAYER AND TOYE LTD



EST. 1884
KILBIRNIE SCHOOL
Whāia te iti kahurangi

Cement Your Support > **BUY A BRICK**

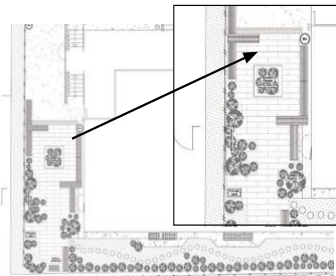
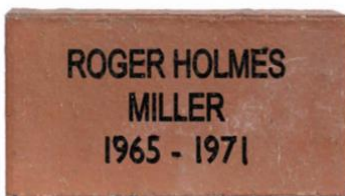
Notice our School under construction? We're transforming the surroundings of the new building into outdoor learning and socializing areas for students and whānau. The West and East sides offer great potential for outdoor learning and inviting communal spaces. To finance these initiatives, we've created two community opportunities.

1. Engraved red clay bricks in the outdoor area paving.
2. Engraved Lego bricks as part of a wall inside.

By purchasing a named engraved brick in the Kilbirnie School WHĀTAITAI Walkway (pictured below), you can both support future students, and also create a very special permanent legacy on the school grounds for you, your child(ren) and their whānau to return to now, and for generations to come.

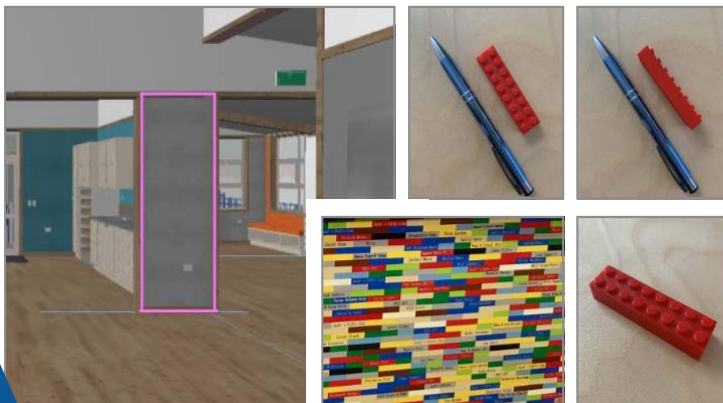
Current and past students, parents and all whānau across the country and world, supporters of Kilbirnie School, organisations and of course all local businesses are invited.

Engrave your name here...



BUY A LEGO BRICK

We are going to build a Lego wall inside the new building. The wall below (with the pink border) has been identified by the architect for the framed display of individual 8x2 Lego bricks which will be engraved. See below for examples.



Details...

Clay Brick / **\$150**
tax deductible.

Maximum of 3 lines,
16 characters including
spaces on each line.
Can purchase multiple.

Lego Brick / **\$35**
tax deductible
4mm x 9mm x 15mm.

Maximum of 20
characters including
spaces, one line.
Can purchase multiple.

To order, please fill out
an order form available
from office or via email.

For more details and
FAQ's see Kilbirnie.
school.nz

Any queries please
email [office@kilbirnie.
school.nz](mailto:office@kilbirnie.school.nz)



- **ART TE AROHA- TE MAHI A NGĀ TAMARIKI (the work of the children).**

Individual, collaborative homeroom and calendar pieces are being produced as part of our celebration of the visual arts. Each homeroom would like to introduce some of their mahi.



Lou's Homeroom has been exploring the topic of Planet Earth and Beyond across multiple curriculum areas. This is the inspiration for our visual art inquiry as well. We are using our knowledge of the solar system to inspire our own scratch art using pastel and tempera paint while learning about visual symmetry. We are excited for whānau to see our calendar art too! We have created ourselves as astronauts exploring space using digital art, pastels and acrylic paint.



Mr.D and Mrs. Te Rito made masks inspired by cubist artists like Picasso. We used recycled cardboard and metallic pastels. We learned about composition and using analogous colours (colours that are next to each other on the colour wheel).



EST. 1884
KILBIRNIE SCHOOL
Whāia te iti kahurangi



The tamariki in Molly and Juliet's Homerooms have been exploring and creating various pieces of art inspired by artists such as Piet Mondrian and Romero Britto. Both Homeroom's have been experimenting with watercolours in preparation for their collaborative pieces.

Whataitai hub is looking at sea creatures and our art is based around this. Taniwha class have done calendar art with fish and are now doing seascapes on canvas. We have blended and tinted paint and are now adding sand and shells to our scene. Our collaborative piece is 'all hands on board'. Something to look forward to.

Kiwi class is also doing a sea creature on canvas. We are also doing a Van Gogh inspired collaborative piece of art working with daisies. We are also doing some wood block pieces.





The students in Mrs Patel's Homeroom have been recreating Vincent van Gogh's iconic "Sunflowers" painting using the pointillism style for their individual art pieces. Their whole class art piece will also have a floral theme with the students using a stamping technique to create a field of flowers on a large canvas.

In Soazik's homeroom, our individual art pieces will be watercolour folded art called concertina. They can sit up on a shelf or fold down and you can see all the 'pages' at once. We are creating a background using watercolours and from spots of paint will create elements that will be layered onto the background. It is very exciting to see the different themes being developed and to see how individual the pieces are turning out to be.





- **EASTERN ZONE SWIMMING.**

On Wednesday this week Katrina and Barbara took our terrific team of swimmers down to the Kilbirnie Aquatic Centre to compete in the Eastern Zone championships. These students had qualified via our school event last term. Katrina informed me of a terrific event for our team! **Exceptional support of each other and some outstanding results also:**

- 50m freestyle - Frankie 2nd, Flossie 3rd
- 25m Freestyle - Frankie 2nd, Walter 2nd, Winnie 3rd, Xanthe 3rd
- 25 Backstroke - Maddy 2nd, Frankie 3rd
- 25 Breast Stroke - Flossie 1st, Frida 2nd
- 25 Butterfly - Xanthe 1st
- Year 4 girls came second in their relay.
- Year 6 girls won their relay.



Frida Isobel, Xanthe and Sana are our famous relay team. Eastern Zone champions- 2022 and 2023. **Barbara** commented on the rarity of their achievement and quality of their swimming as a team. The girls will represent the Eastern Zone at the Interzone event.



EST. 1884
KILBIRNIE SCHOOL
Whāia te iti kahurangi

• **SCHOOL PHOTOS-NEXT WEEK.**



**Inspire Photography will be coming to photograph the children at
Kilbirnie School from 9am on:**

Thursday 31 August 2023

As part of Kilbirnie School's fundraising for the year Inspire Photography will donate
10% of all sales directly to Kilbirnie School.

Inspire Photography is an award-winning, Wellington-based professional photography studio who
specialise in School and ECE photography. We are popular throughout a number of Wellington
Schools for the photographs we take, the manner in which we take them and our generous
fundraising offers. We are unique in our style and approach.

What we offer on the day

- A totally relaxed and unique style of photography
- A friendly and easy-going photographer
- Fun, games and general silliness to get even the shyest children smiling
- Group photos of each class
- Individual portraits, friend portraits and siblings photos.

To view the pictures, we offer an online ordering system. The School Office will be advised of the
password for the online gallery when the proofs are ready. Proofs are available to view online
approximately two weeks after the date of the photo shoot, you will then have two weeks to place an
order and two weeks after orders will be delivered back to the School. If you would prefer not to order
online, please contact us in the studio for assistance.

Product	Standard Price	Multibuy 3+
Size AA - 4x 2x3" (5x15cm)	\$22.00	\$15.00
Size A - 6x4" (10x15cm)	\$17.00	\$15.00
Size B - 7.5x5" (12.5x20cm)	\$20.00	\$17.00
Size C - 12x8" (20x30cm)	\$30.00	\$25.00
Size D - 10x15" (24.5x37cm)	\$45.00	\$30.00
10x8" Group Laminate	\$19.00	\$17.00
Package 1 - AA + A + B	\$30.00	-
Package 2 - Class Photo + B	\$30.00	-
Package 3 - Class Photo + AA + A + B	\$45.00	-
Whānau Package - 3 x B	\$45.00	-
HIGH Res Digital File	\$40.00	\$30.00

Creative Portraits for Modern Families

Courtyard, Level 1, Studio 3, 177B Thorndon Quay, Pipitea, Wellington.
Phone 04 384 8009 Web www.inspirephotography.co.nz



EST. 1884
KILBIRNIE SCHOOL
Whāia te iti kahurangi

- **NEWS FROM OUR COMMUNITY.**

If your child loves doing cartwheels, handstands, trampolining, flips, dancing, or parkour, then they will thrive at Bigair Gym!

Bigair Gym classes are excellent for fun, focus and fitness! Children learn new skills and develop personal confidence and self-achievement! Strong focus is given to safety and technique, ranging from fundamentals to advanced skills. The structured classes follow a Bigair Badge Programme, which creates focused learning, and allows children to achieve and feel personal progression! Bigair classes include **GYMNASTICS, TRAMPOLINING, TUMBLING, FREE RUNNING** (thats parkour with flips) & **CHEERLEADING!** Inquire about Bigair **BIRTHDAY PARTIES** too!

Bigair Gymsports Kapiti ph. 297 0400 e. kapiti@bigairgym.co.nz

Bigair Gym Owhiro Bay ph. 383 8779 e. wgt@bigairgym.co.nz

Bigair Gym Tawa ph. 232 3508 e. office@bigairgym.co.nz

Suzanne Aubert Scout Group

Develop teamwork, life skills, personal resilience whilst having fun in the outdoors.

The Suzanne Aubert Scout Group is open to both girls and boys: Keas (aged 5 – 8), Cubs (aged 8 – 11) and Scouts (aged 11 – 14) on Monday nights 6.30 – 8pm at St Anne's Hall, 22 Emmett St Newtown.

This terms activities include: camping, campfire cooking, mountain biking, outdoor adventure, archery and swimming. Come along and join the adventure.

For more details email SuzanneAubert@group.scouts.nz.

AKOTECH CodeCamps October School Holidays - FREE PRIZE & EARLY DISCOUNTS

Our holiday camp allows children from the ages of 7-12 to develop 21st century skills in a fun and action packed environment. Create and train your own AI Avatars, make games, code drones & go to work for a simulated Tech Gaming Studio to build games for a big client.

Develop confidence & initiative through design, creativity, solving problems, presenting & collaboration. Create your own games, worlds and apps to make our world a better place.

We also have **Literati Lab** just for girls, which includes AI Art & Animation.

Enter our competition to win a FREE 4 day pass to one of our CodeCamps

Thorndon School: 25th - 28th September & 5th - 8th October

Book Now at www.akotech.nz

Competition: www.codecamp.co.nz/competition

EarlyBird Save Up to 21% Until 25th Aug

Siblings Save 6%



EST. 1884
KILBIRNIE SCHOOL
Whāia te iti kahurangi

Music Holiday Programmes- Monday the 2nd to Friday the 6th of October

Are you looking for a holiday programme that is suited to creative and musical children? Busking trips to build their confidence, rock band school, songwriting sessions and lots of fun activities. Perfect for singers, guitarists and keyboard players. Beginners to advanced. Contact us today. geoff@therockacademy.co.nz or 021 565 750.

Find us on **Capital BMX**
www.capitalbmx.co.nz
capitalbmx.info@gmail.com
Come and have a go!

CAPITAL BMX CLUB
Wellington

Scan to watch video

HAVE A GO
Love riding bikes?
Keen to develop your riding skills?
Looking for a fun & family friendly Club?
Come on down to **CAPITAL BMX**

Check out our new development straight
And get tips from our coaches
Training Thursday evening
(during daylight savings)
Club Day Sunday morning
HIRE a BMX bike, helmet & gloves \$10
or buy 3 x HAVE A GO SESSIONS for \$20
GET THE WHOLE FAMILY INVOLVED
SEASON STARTS 10th SEPTEMBER 2023

Find us on **Capital BMX**

www.capitalbmx.co.nz

**WELLINGTON
BRICKSHOW**

Amazing LEGO® creations from some of
NZ's best builders

16th Sept
9am - 5pm

17th Sept
9am - 4pm

\$10 Adult / \$7 Child
EFTPOS Available

Walter Nash Centre, Lower Hutt

www.well-lug/tickets