



KILBIRNIE SCHOOL EST. 1884
Whāia te iti kahurangi



TERM 2. WEEK 8.

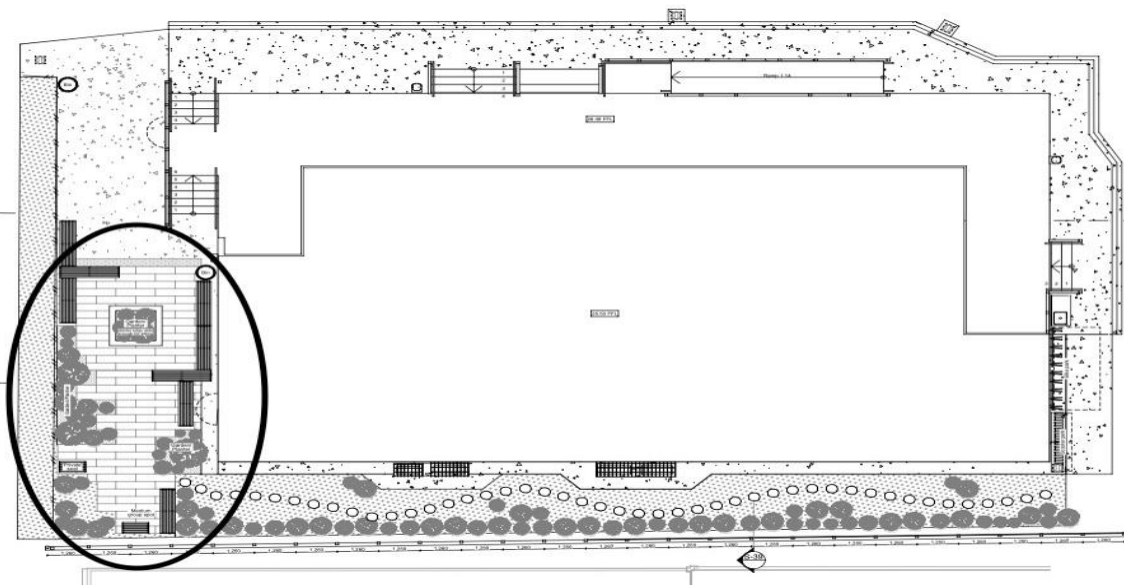
In the last newsletter I mentioned our plan to landscape the perimeter of the new building to create outdoor learning and socialising areas for students and whānau. The space on the West and East sides of the new building represents a tremendous opportunity to facilitate outdoor learning and also provide appealing spaces for being together outside. To help fund these developments we have developed two opportunities for our community. Both of these are unprecedented at Kilbirnie School and represent an opportunity to leave a permanent whānau or individual record (or both). We hope local businesses and organisations will also support this initiative particularly the red clay brick option.

1. **Engraved red clay bricks in the outdoor area paving.**
2. **Engraved Lego bricks as part of a wall inside the building.**

THE NEW WHĀTAITAI HUB BUILDING:



WEST SIDE OUTDOOR AREA- A TARGET OF THE FUNDRAISING.

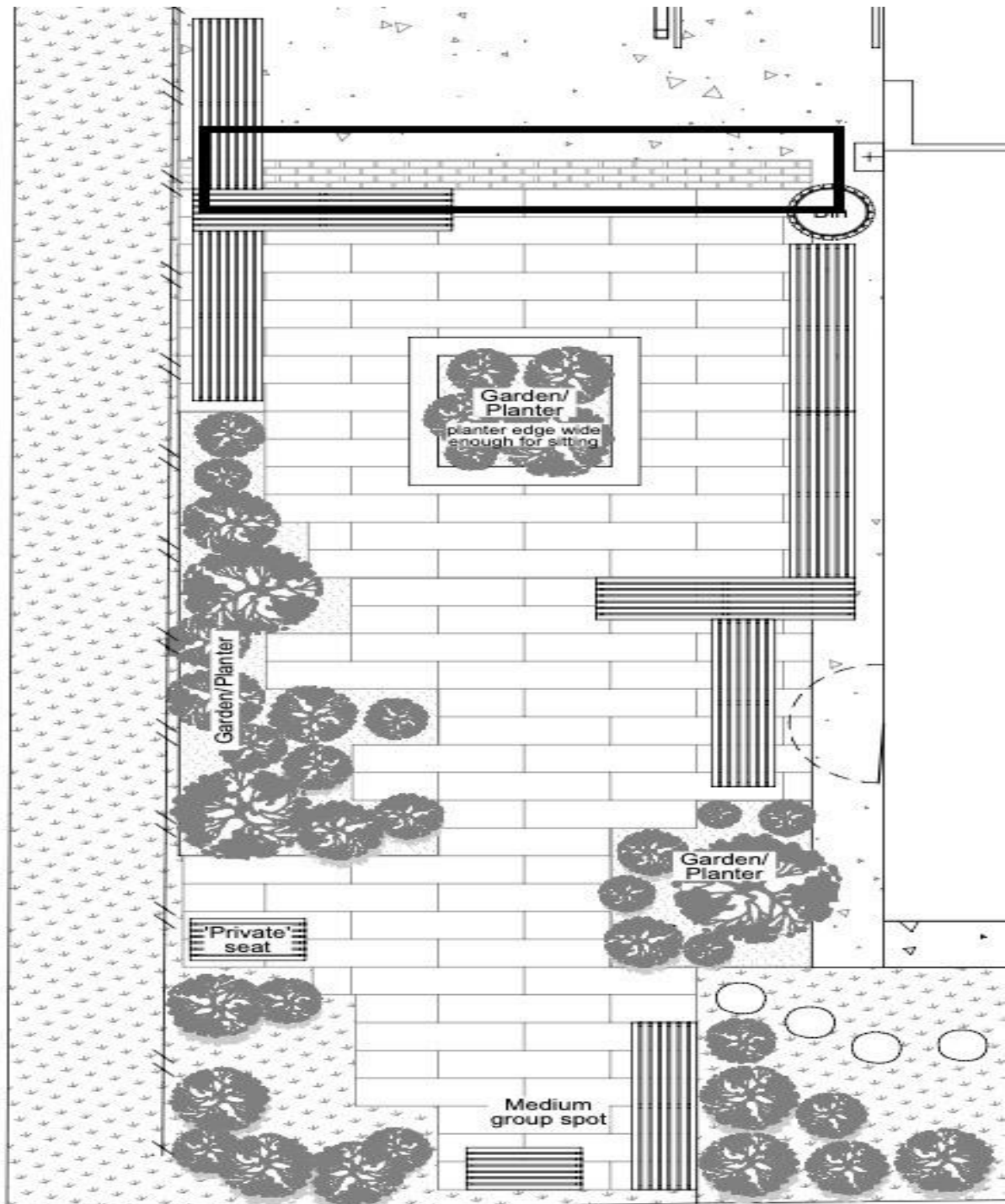




1. Engraved clay bricks in the outdoor area paving.

Our architect has designed a space for the placement of engraved red clay bricks. As can be seen in the drawing below, these are placed at the start of the paved section of the West side outdoor area. See below for examples of the appearance of the engraved bricks.

More details are in the FAQs and order form.





EST. 1884
KILBIRNIE SCHOOL
Whāia te iti kahurangi





2. Engraved Lego bricks as part of a wall inside the building.

We are going to build a Lego wall inside the new building. The wall below (with the pink border) has been identified by the architect for the framed display of individual 8x2 Lego bricks which will be engraved. See below for examples of the appearance of the wall.

More details are in the FAQs and order form.



