



## TERM 2. WEEK 10.

Welcome to **Aaliyah** in Mrs. Patel's Homeroom.

### DATES FOR THE DIARY.

#### June.

- **Friday 30- Last day of term 2.**

#### July.

- **Monday 17- First day of term 3.**
- **Thursday 20- Matariki celebration. School day choosing activities and Parentlink Matariki evening.**
- **Wednesday 26- Eastern Zone netball. Parentlink Matariki evening postponement date.**
- **Thursday 27- school hui (assembly).**

#### August.

- **Thursday 3- Board meeting 7pm.**
- **Thursday 10- school hui (assembly).**
- **Wednesday 16- Learning conferences day 1.**
- **Thursday 17- Learning conferences day 2.**
- **Wednesday 23-Eastern Zone swimming.**

### PRINCIPAL NEWS.

Kia ora koutou,

The Kilbirnie School Matariki, Māori New Year, celebration is planned for Thursday July 20, this is in week 1 of next term. Last week students made their selections for our Matariki celebration activities and learning opportunities. All students chose 7 of the 17 activities available, we then organise them into groups. Students will work with others from different homerooms and ages depending on their selections, everyone does 3 activities during the day.

The choosing was very exciting for students, they will get to select again when we run the Choosing Friday programme in term 4. We invite whānau to visit the school during the day to see what the students are doing. Please do come along and see us if you would like to. Sign in and out at the office, Carolina will be able to tell you where your child is working. Please wear a mask. The one-hour sessions start at 9.30am, 11.30am and 1.45pm.

Kilbirnie School ParentLink invite you to come along to our community evening celebration. Check out the information and poster in the next page of the newsletter.

Click [HERE](#) to learn more about Matariki.

**Tony Austin- Principal.**



EST. 1884  
**KILBIRNIE SCHOOL**  
Whāia te iti kahurangi

- KILBIRNIE SCHOOL CELEBRATES MATARIKI.

# MATARIKI

all students and their whānau are invited to celebrate

**THURSDAY 20 JULY ★ 5PM - 7PM**

TOAST MARSHMALLOWS BY THE FIRE PIT

**ENTRY \$6** PER PERSON  
INCLUDES: SAUSAGE SIZZLE, HOT SOUP + BREAD  
AND TOASTED MARSHMALLOWS.  
Extra Sausages \$2.50 - available on the night  
**PURCHASE TICKETS AT OFFICE OR ON THE NIGHT - CASH ONLY**  
LOW WASTE EVENT - BYO CUPS + UTENSILS

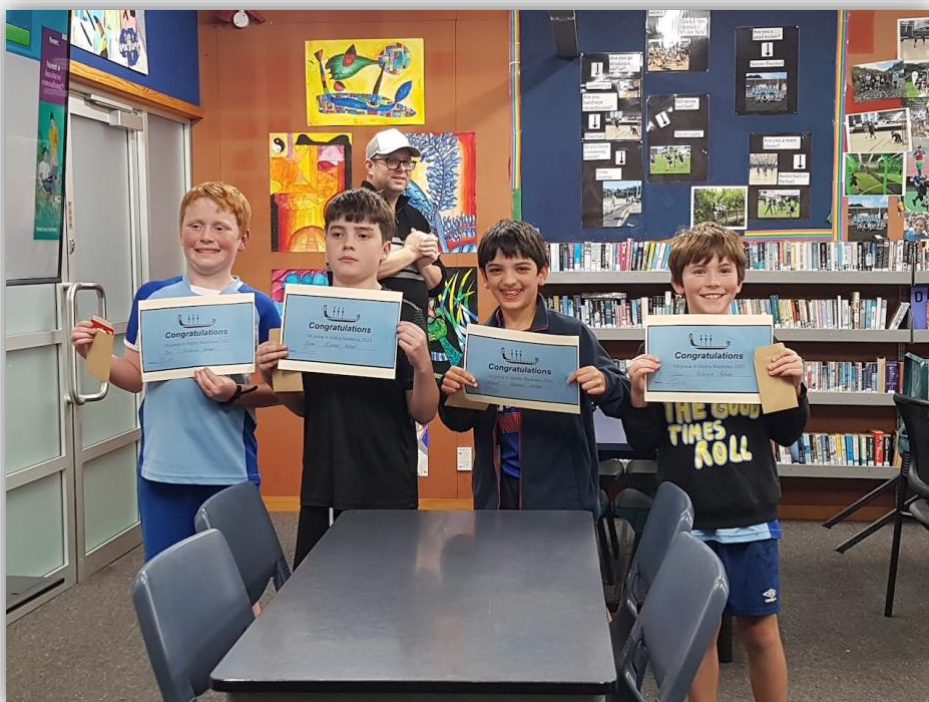
SLIDESHOW OF STUDENT MATARIKI ACTIVITIES  
PLAYING THROUGHOUT THE EVENING.  
KAI, FIRE PIT AND COMMUNITY CATCH UP.  
POSTPONEMENT DATE WEDNESDAY 26 JULY.  
KAPA HAKA PERFORMANCE FOR WHĀNAU:  
THURSDAY JULY 27TH - 2.15PM IN SCHOOL HALL





- FANTASTIC ACHIEVEMENT- MATHS MADNESS COMPETITION.**

Congratulations to the students who represented Kilbirnie School at the Evans Bay Intermediate Maths Madness Competition recently. A special acknowledgement to Team Kakapo who won the competition- **outstanding!**





- **WHĀTAITAI BUILDING REPLACEMENT- UPDATE.**

More excellent progress with the new building since the last newsletter.

This week's image shows the roof framing in place. I hope that when you return for the new term there will be a roof on the building! The bottom image gives a sense of the North facing covered way and main entrance.







- **INQUIRY LEARNING IN TERM 2.**

This term the inquiry learning studies across the school have been underpinned by the Aotearoa New Zealand histories curriculum. This curriculum is part of learning in the social sciences area of The New Zealand Curriculum. Students and teachers have enjoyed teaching and learning based on the intent of this curriculum for the first time this term. Read below for a brief summary from each hub.

### **Matairangi**

**By Xanthe, Frida and Sana.**

This term for our inquiry we've been learning all about Aotearoa history and the early Pacific voyages. Earlier this term, we went to Te Papa and learned about nature, Kupe, their boats and Wheke. We learned all about star navigation including a fun scavenger hunt. We also learned about Tupaia the master navigator and how he could identify hundreds of islands by the land and nature around him. In class we learnt about the different types of waka and what they were used for. We continued further exploration of when and where the first Māori arrived, what they brought with them and where they had previously traveled (including the Polynesian Triangle, from the Pacific islands to Rapanui, Easter Island, then finally settling in Aotearoa.) We have been working on a presentation to share the stories and knowledge we have learnt. For example, my group is creating a play/performance. Other students are making dioramas, model waka and scripts.

### **Ngake**

**By Max and Cami**

A long time ago part of Kilbirnie and Miramar were sunken and a big earthquake raised them up. Hataitai used to be a horse farm and a tunnel was built so that the farmers could get food to the city. Some streets in Hataitai are named after trees.

Ngake and Whataitai used to live in Te Whanganui-a-tara, Ngake was the fast one and Whataitai was the slow one. Ngake broke free and Whataitai turned into Land. You might hear Te Keo crying on Mt Victoria.



### **Whātaimai.**

During this term Whātaimai hub visited the Wellington museum gaining a lot of information about pre-European Māori, how they lived. We heard several myths and legends from this area. We also visited the Wharewaka along the waterfront and listened to and participated in a small mihi whakatau.

Whataimai hub visited a pā site called Te Akatarewa on the town belt -Te Ranga-a-Hiwi. Ricky Prebble from Culture and Heritage guided and talked to us about the site and we learnt that it was a safe place for Māori when others may have been attacking them. He talked about the Kawa kawa, Koromiko, Kowhai, Rangiora (bushman's toilet paper) and other trees that could be helpful for our tinana (body).

Pre-European Māori communicated by using a large conch shell like a horn (taonga pūoro). They also used a small whistling gourd (poiawhiowhio) tied to a string to mimic bird sounds so they could catch them to eat. Another instrument (pūrerehua) when spun in the air made a humming sound. This was used to attract lizards so Māori could catch them for food. They made a sad sound and were used at tangi (funerals) when people were very sad.





EST. 1884  
**KILBIRNIE SCHOOL**  
Whāia te iti kahurangi

- WHĀTAITAI BUILDING REPLACEMENT- OUTSIDE SPACES FUNDRAISER.



EST. 1884  
**KILBIRNIE SCHOOL**  
Whāia te iti kahurangi

## Cement Your Support > **BUY A BRICK**

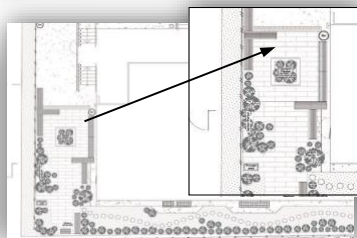
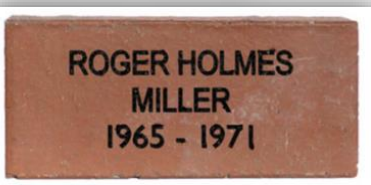
Notice our School under construction? We're transforming the surroundings of the new building into outdoor learning and socializing areas for students and whānau. The West and East sides offer great potential for outdoor learning and inviting communal spaces. To finance these initiatives, we've created two community opportunities.

1. Engraved red clay bricks in the outdoor area paving.
2. Engraved Lego bricks as part of a wall inside.

By purchasing a named engraved brick in the Kilbirnie School WHĀTAITAI Walkway (pictured below), you can both support future students, and also create a very special permanent legacy on the school grounds for you, your child(ren) and their whānau to return to now, and for generations to come.

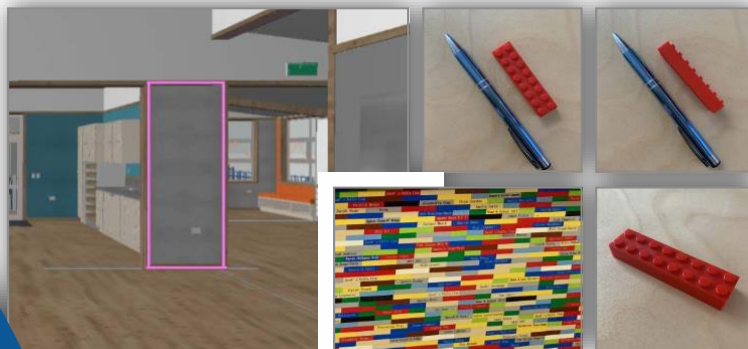
Current and past students, parents and all whānau across the country and world, supporters of Kilbirnie School, organisations and of course all local businesses are invited.

Engrave your name here...



## **BUY A LEGO BRICK**

We are going to build a Lego wall inside the new building. The wall below (with the pink border) has been identified by the architect for the framed display of individual 8x2 Lego bricks which will be engraved. See below for examples.



### Details...

Clay Brick / **\$150**  
tax deductible.

Maximum of 3 lines,  
16 characters including  
spaces on each line.  
Can purchase multiple.

Lego Brick / **\$35**  
tax deductible  
4mm x 9mm x 15mm.

Maximum of 20  
characters including  
spaces, one line.  
Can purchase multiple.

To order, please fill out  
an order form available  
from office or via email.

For more details and  
FAQ's see Kilbirnie.  
school.nz

Any queries please  
email [office@kilbirnie.  
school.nz](mailto:office@kilbirnie.school.nz)





- **AROUND THE SCHOOL.**

Learning across the school continues as we reach the end of term. **Leah, Nyla and Flossie** from Tamara's lunchtime art club shared their mosaic taniwha at assembly. **Poppy and Olive** talked about their fantastic kiwi art work. **Soazik's homeroom** have been testing their rockets. On Tuesday this week we had our year 4-6 SwimFeast- thanks **Katrina and Barbara** for the organization. Some students will be off to the Eastern Zone swimming event next term.







• **SCHOOL PHOTOS NEXT TERM.**



**Inspire Photography will be coming to photograph the children at Kilbirnie School from 9am on:**

**Thursday 31 August 2023**

As part of Kilbirnie School's fundraising for the year Inspire Photography will donate 10% of all sales directly to Kilbirnie School.

Inspire Photography is an award-winning, Wellington-based professional photography studio who specialise in School and ECE photography. We are popular throughout a number of Wellington Schools for the photographs we take, the manner in which we take them and our generous fundraising offers. We are unique in our style and approach.

**What we offer on the day**

- A totally relaxed and unique style of photography
  - A friendly and easy-going photographer
- Fun, games and general silliness to get even the shyest children smiling
  - Group photos of each class
- Individual portraits, friend portraits and siblings photos.

To view the pictures, we offer an online ordering system. The School Office will be advised of the password for the online gallery when the proofs are ready. Proofs are available to view online approximately two weeks after the date of the photo shoot, you will then have two weeks to place an order and two weeks after orders will be delivered back to the School. If you would prefer not to order online, please contact us in the studio for assistance.

Product	Standard Price	Multibuy 3+
Size AA - 4x 2x3" (5x15cm)	\$22.00	\$15.00
Size A - 6x4" (10x15cm)	\$17.00	\$15.00
Size B - 7.5x5" (12.5x20cm)	\$20.00	\$17.00
Size C - 12x8" (20x30cm)	\$30.00	\$25.00
Size D - 10x15" (24.5x37cm)	\$45.00	\$30.00
10x8" Group Laminate	\$19.00	\$17.00
Package 1 - AA + A + B	\$30.00	-
Package 2 - Class Photo + B	\$30.00	-
Package 3 - Class Photo + AA + A + B	\$45.00	-
Whānau Package - 3 x B	\$45.00	-
HIGH Res Digital File	\$40.00	\$30.00

**Creative Portraits for Modern Families**

Courtyard, Level 1, Studio 3, 177B Thorndon Quay, Pipitea, Wellington.  
Phone 04 384 8009 Web [www.inspirephotography.co.nz](http://www.inspirephotography.co.nz)



EST. 1884  
**KILBIRNIE SCHOOL**  
Whāia te iti kahurangi

- **NEWS FROM OUR COMMUNITY.**



### **Seeking a PLAYGROUP CO-ORDINATOR!**

**Do you have experience working with children in an educational setting – preferably Early Childhood? Maybe you've been teaching and are looking to reduce your hours for some work/life balance.**

We're looking for a new Playgroup Coordinator who has enthusiasm for working with young children and their families to run our Community Playgroup. Our playgroup runs three times a week during term time (yes that means school holidays off!); Monday, Wednesday and Friday 8.45am -12.15pm. The role is 12.5 hours per week, including pack up and administration.

This is a sole charge position, but you'll have the support of your manager - the Community House Coordinator - when needed. You'll be excited to encourage parent involvement in running Playgroup, able to manage finances and donations, and provide a safe and stimulating environment for the children and their caregivers.

You'll have a passion for running exciting and varied learning programmes for young children aged 0-5 years old. Of course, you'll love what you do and be keen to get amongst the Hataitai Community.

Your ability to work well with parents and caregivers is vital and an ECE qualification or similar teaching qualification is an advantage, as you will be following *Te Whaariki* (the NZ Early Childhood Curriculum) and work alongside the Ministry of Education to meet early childcare requirements.

Please note applicants will need to pass a New Zealand Police Children's Worker Safety Check. To apply send your cover letter and CV through Seek.

Job applications close **12 July 2023**.

For more information or to apply for the role, head to: <https://www.seek.co.nz/job/68135850>





EST. 1884  
**KILBIRNIE SCHOOL**  
Whāia te iti kahurangi

FREE COMMUNITY EVENT

# MATARIKI DANCE PARTY

**FRIDAY 14 JULY 2023**  
**5PM - 7PM**  
**FAMILY FRIENDLY**

**SNACKS & DRINKS  
PROVIDED**

**HATAITAI CENTRE  
157 HATAITAI ROAD**



KILBIRNIE SCHOOL  
EST. 1884  
Whāia te iti kahurangi

# Hataitai Playcentre Movie Night Fundraiser



**8pm Friday, 21st July**  
**Penthouse Cinema**  
**\$20/Ticket**

Email [hataitaiplaycentrefundraising@gmail.com](mailto:hataitaiplaycentrefundraising@gmail.com) for tickets

Playcentre





EST. 1884  
**KILBIRNIE SCHOOL**  
Whāia te iti kahurangi

Show your support for the local Hataitai Community House and attend our biggest fundraising event of the year!

**BINGO NIGHT FUNDRAISER**

**\$20 ENTRY**  
**7:30PM**  
**23 JUNE 2023**  
**THE REALM BAR AND BISTRO**  
JOIN US FOR DINNER FROM 6PM

TICKETS AT [EVENTS.HUMANITIX.COM/HATAITAI-BINGO-FUNDRAISER](https://events.humanitix.com/hataitai-bingo-fundraiser)

PROCEEDS GO TOWARDS HATAITAI COMMUNITY HOUSE SIGNAGE AND MAINTAINENCE  
ONE ENTRY INCLUDES 2 BINGO CARDS  
ADDITIONAL CARDS \$2 EACH  
PRIZES AND SPOT PRIZES GENEROUSLY DONATED BY:

THE  
*Realm*  
HATAITAI

Show your support for the local Hataitai Community House and attend our biggest fundraising event of the year! Join us for six rounds of bingo with prizes and spot prizes on the night.

We are fundraising for some much-needed signage for our building and building maintenance this year. Have you tried coming to the Community House and got lost on the way? Then you'll see the benefit of some signage. We are hoping to employ a Wellington-based mural artist to paint a mural on the fencing on Waipapa Road. So the next time you use our venue for an event, pick up your coop order or drop off your recycled goods or something else, you'll know where to go.

Event Information: The restaurant is open from 6 pm for pre-event dinner and drinks.

Round 1 starts at 7.30 pm. Please arrive prior to the 7.30 pm start to ensure that everyone is seated, comfortable and ready to play at the starting time! Tickets are \$20 each, which includes entry to the event and two bingo cards. Additional cards can be purchased for \$2 per card on the night.



EST. 1884  
**KILBIRNIE SCHOOL**  
Whāia te iti kahurangi

# KIDS COOKING CLASSES



WITH SARAH HALEWOOD



**Perfect for kids age 10 to 14**

Send your child off to become a Mini Masterchef these July school holidays. In the morning sessions, we'll bake treats perfect for an afternoon tea feast. During the afternoon sessions, we'll prepare a delicious dinner and dessert for the whole family. And, for the first time, we're holding a Mini Masterchef pop-up restaurant where the children will cook and serve their families a three-course meal at Prefab hall.

## DETAILS

### Morning Sessions

Wednesday 5th July, Thursday 6th July, Wednesday 12th July: 9:30am - 12:30pm **\$85**

### Afternoon Sessions

Wednesday 5th July, Thursday 6th July, Wednesday 12th July: 1:30pm - 4:30pm **\$125**

### Full Day Sessions (Includes lunch from Prefab)

Wednesday 5th July, Thursday 6th July, Wednesday 12th July: 9:30am - 4:30pm **\$225**

### Mini Masterchef Pop-up Restaurant

Thursday 13th July: 12pm - 5pm + dining 5pm - 7pm **\$285**

## WHERE

Prefab Hall - 14 Jessie Street Te Aro

## TO BOOK EMAIL

sarahhalewood8@gmail.com





# MENUS



## WEDNESDAY 5TH

### Morning Baking Session:

Boikos  
Chocolate cake  
Beignets

### Afternoon Full Meal Session:

**Main:** Homemade beef burgers, milk buns with garlic potatoes and green salad

**Dessert:** Apple crumble

## WEDNESDAY 12TH

### Morning Baking Session:

Homemade sausage rolls  
Chocolate chip cookies  
Mini lemon and sour cream cakes

### Afternoon Full Meal Session:

**Main:** Sticky pork ribs with potato salad and coleslaw

**Dessert:** Lemon tart

## THURSDAY 6TH

### Morning Baking Session:

Cream doughnuts  
Parmesan crisps  
Banana cake

### Afternoon Full Meal Session:

**Main:** Marinated chicken kebabs, red rice salad, garlic and herb yoghurt sauce and homemade flatbreads

**Dessert:** Chocolate bubble pot with whipped cream

## THURSDAY 13TH

### Mini Masterchef Pop-up restaurant

**Appetiser:** Smoked salmon bellinis with cream cheese and fish roe

**Main:** Cypriot lamb with greek salad and homemade focaccia

**Desert:** French chocolate cake with chocolate sauce and whipped cream

## PRICES

Morning Baking Session: \$85  
Afternoon Full Meal Session: \$125  
Full Day Session: \$225  
Pop-up Mini Masterchef Restaurant:  
\$285 (price includes tuition + a sit down meal for 4 people)

## TO BOOK EMAIL

sarahhalewood8@gmail.com

## WHERE

Prefab Hall - 14 Jessie Street Te Aro

NOTE: VEGETARIAN OPTIONS CAN BE ARRANGED UPON REQUEST



EST. 1884  
**KILBIRNIE SCHOOL**  
Whāia te iti kahurangi

**Does your child like to sing, dance, act and perform?**

**Would you like your child to build more confidence and make more friends?**



**Performing arts classes led by a London West End performer!**

After school and weekend classes in Aotea, Johnsonville, Karori, Newtown, Lower Hutt, and Upper Hutt!

Two-week trials available.

For more information, please visit

[www.spotlightperformingarts.co.nz](http://www.spotlightperformingarts.co.nz)



**Fantail Nature School**

School Holiday Program  
July 2023

Fantail Nature School is opening in Newtown! Book now to grab your spot in our July School Holiday Program - limited spaces available!

**Now open for enrolments!**  
\$65.00 per child per day  
9:00 am - 3:00 pm  
Tuesdays and Thursdays

Go to: [enrolmy.com](http://enrolmy.com) and search:  
**Fantail Nature School Holiday Program**

**Our Philosophy**

Fantail Nature School is based on internationally renowned UK Forest School Philosophy. Child-led exploration, experimentation and creativity in nature, guided by our trained and experienced nature school leaders. Kids thrive in this environment, learning hands-on skills, respect for nature, self-responsibility, and creating lasting friendships.

[@fantailnatureschool.com](mailto:@fantailnatureschool.com)  
Newtown leader: 029 778 4477  
[fantailnatureschool@hotmail.com](mailto:fantailnatureschool@hotmail.com)

**CodeCamp July School Holidays** CodeCamp allows children from the ages of 7-12 to develop 21st century skills in a fun and action packed environment.

Develop confidence & initiative through design, creativity, solving problems, presenting & collaboration. Create games, apps.

Thorndon School: 3rd - 6th & 10th - 13th July

Book Now at <https://codecamp.co.nz>

EarlyBird Save 15%

Siblings Save 6%

Seatoun Arts and Crafts have well-known NZ author Dame Fiona Kidman as a guest speaker at its June meeting,

(Wednesday 21<sup>st</sup> June), 7.30pm, in the Seatoun Village Hall, Forres Street, Seatoun. No entry fee. Supper to follow.





EST. 1884  
**KILBIRNIE SCHOOL**  
Whāia te iti kahurangi

### International Student Homestays Wanted

St Catherine's College in Kilbirnie is looking for kind and caring families to host our international students. We are looking for hosts who can look after students arriving in July 2023.

We have both long term and short term options available.

If you are interested in becoming a host, please contact:

[international@stcatherinescollege.school.nz](mailto:international@stcatherinescollege.school.nz)

for more details.

We would love to hear from you!

These school holidays KidzStuff Theatre for Children are presenting Shalakazap!, Written by Jenny Wake, Directed by Amalia Calder

What: Shalakazap!

When: 1st - 8th July 2023

Where: Tararua Tramping Club, 4 Moncrieff Street, Mt Victoria, Wellington

Times: Weekdays 10am & 11:30am, Saturdays 10am, no show Sundays

Tickets \$13.50pp, Family pass (4 tickets) \$50.00, Children under 2 Free

Bookings: [www.kidzstufftheatre.co.nz](http://www.kidzstufftheatre.co.nz)

The Wellington City Libraries Big Book Sale 2023 is taking place at St Patrick's College Hall (581 Evans Bay Parade, Kilbirnie), from the 7<sup>th</sup> to the 10<sup>th</sup> of July, 10am-4pm daily. Browse a selection of pre-loved books, CDs, DVDs, songbooks and music scores, comics, magazines, and more – we'd love for them all to find loving new homes. With prices as low as 3 items for \$1 (for marked collections), it's the perfect opportunity to bag a bargain or find a hidden gem. We'd love to see you there!

Join Wonderplay's production of Alice in Wonderland! Wonderplay have spaces available for 5-8 year olds in New Wonders (3.45pm Thurs, Island Bay), 9-13 year olds in Star Players (4.30pm Thurs, Island Bay) and 9-14 year olds in Advanced Drama (4pm Weds, Toi Poneke, Abel Smith St), Email [debs@wonderplay.co.nz](mailto:debs@wonderplay.co.nz)



EST. 1884  
**KILBIRNIE SCHOOL**  
Whāia te iti kahurangi

### **Hockey School Holiday Programme for July 2023**

Looking for something outdoors to keep the kids entertained these school holidays. Wellington Hockey is excited to be offering a school holiday programme for kids aged 5 to 12 on Tuesdays and Wednesdays of the school holidays. This programme is designed to be fun and engaging for both kids new to hockey with no previous experience and those who already play.

The school holiday programme will be held at National Hockey Stadium, Mt Albert, Berhampore rain or shine and led by our Development Officer, Regan Fricker.

Bring lunch and snacks, a drink bottle, a jacket, and a change of clothes in case the weather changes. Sticks and sports equipment will be available. We will make the most of our time on the turf where possible but if it is too wet or cold, we will move indoors for activities, games and movies.

**Who:** Children aged 5 - 12 years

**Where:** National Hockey Stadium, Mt Albert, Berhampore

**Time:** 8:30am to 3pm

**When:** Tuesday 4<sup>th</sup> July, **Wednesday** 5<sup>th</sup> July, Tuesday 11<sup>th</sup> July and 12<sup>th</sup> Wednesday

**Cost:** \$45 per day with a discount when booking multiple days.

Register now via player management system PlayHQ <https://www.playhq.com/hockey-new-zealand/register/e9b3ee>

If you have any questions, please email [regan@wellingtonhockey.org.nz](mailto:regan@wellingtonhockey.org.nz)

“Whakanuia a Matariki! Celebrate Matariki with Wellington City Libraries these holidays, 1 – 16 July. Join us at the bonfire for hot chocolate and cosy stories, become a celestial navigator with our star maps and introductory D&D sessions, unleash your creativity with nature-inspired art and LEGO® sessions as well as puppetry performances and much more! All events are totally free, but some require registration as space may be limited – visit [wcl.govt.nz/kidsholidays](http://wcl.govt.nz/kidsholidays) for the



EST. 1884  
**KILBIRNIE SCHOOL**  
Whāia te iti kahurangi



**PLANiTPRO**

## **KILBIRNIE TENNIS CLUB TERM 3 2023**

We have some great programs for all ages and abilities during Term 3 at Kilbirnie Tennis Club!

### **PROGRAMS:**

- Hot Shots
- Rise Up Squad
- Private Groups
- Private Lessons

### **COACH:**

The coach for these programs will be Troy Leamy.

For more information please contact Troy or please follow the link below to see more information on our site and to book.

<https://www.planitpro.co.nz/kilbirnie-tennis-club/>



0223178592



coach@kilbirnietennis.net.nz