



KILBIRNIE SCHOOL  
EST. 1884  
Whāia te iti kahurangi



## TERM 1. WEEK 7.

Welcome to Rocco in Mrs. Patel's Homeroom.

### DATES FOR THE DIARY.

- **March.**

- **Thursday 23- School hui (assembly).2.15pm in school hall.**
- **Sunday 26- last day for Whānau pool key use.**
- **Wednesday 29- Eastern Zone floorball.**
- **Thursday 30- School Board hui.**

- **April.**

- **Tuesday 4- Thursday 6- year 5 and 6 camp at Kaitoke.**
- **Thursday 6- last day of term 1.**
- **Monday 24- Teacher Only Day.**
- **Tuesday 25- ANZAC Day public holiday- school closed.**
- **Wednesday 26- Back at school for term 2. Matairangi hub start weekly swimming programme at WRAC.**

- **May.**

- **Tuesday 2- Learning conferences day 1.**
- **Wednesday 3- Learning conferences day 2.**
- **Thursday 4- - School hui (assembly).2.15pm in school hall.**
- **Thursday 11- School cross country.**

### PRINCIPAL NEWS.

#### A message from the Wellington City Council.

Wellington City Council are working on a masterplan for Kilbirnie and Evans Bay Park which will outline the vision and overall layout for the site. This will include:

- A destination Skate park
- Open space enhancements within Kilbirnie Park
- Recommendations around future investment for facilities in the park

We want to understand how you currently experience the park and what opportunities there may be for making it a more attractive place to spend time. Share your thoughts by completing our 5 minute survey (closes 28 March)

Visit our [Kōrero Mai](#) page to share your thoughts.

### CONTACT INFORMATION.

Please remember to update the office if there are any changes to your address, phone or email or if you want additional addresses added to receive the email from the school.



EST. 1884  
**KILBIRNIE SCHOOL**  
Whāia te iti kahurangi

- KILBIRNIE SCHOOL PARENTLINK PRESENTS:

# RAINBOW DISCO

## WED 29 MARCH

JUNIORS (YR 1-3) 5.30 - 6.15pm  
SENIORS (YR 4-6) 6.30 - 7.30pm

**TICKETS ON SALE AT THE OFFICE & DOOR \$5 PER CHILD**  
Spot prizes for best costume, funkiest dancer, enthusiasm & unique moves.  
Siblings welcome with a parent. Baking & iceblocks for sale - cash only.





## • KILBIRNIE SCHOOL GRADUATE PROFILE.

As we enter the later part of the first term, I would like to reintroduce our graduate profile to all parents and whānau. The graduate profile sits alongside the strategic goals we have for the school, these are contained within our charter which can be found on the school web site. The graduate profile captures what we believe to be essential competencies that will enable our students to be effective, independent learners and community members at our school, throughout their educational journey and into the work force. We took your feedback on these at the end of 2021 and will review again at the end of this year.

The graphic below also contains our mission statement, values, principles and whakatauki. The imagery represents Ngake, Whātaimai and Te keo and can be found around the school and on our school clothing. I will take the opportunity to retell the story of the taniwha of Wellington Harbour to all our students in an assembly next term.

Please do take a moment to read the graduate profile and notice the connection between the competencies and some of the work of the school I mention later in this newsletter. Come and talk to me if you are interested in learning more about the graduate profile.

**KILBIRNIE SCHOOL** EST. 1884  
Whāia te iti kahurangi

To challenge and inspire for  
lifelong learning and achievement.

### OUR VALUES

Our school values are woven through the curriculum and modelled by staff, students and community.

Kilbirnie Children C.A.R.E.

- C Confidence
- A Achievement
- R Respect
- E Empathy

### OUR TEACHERS

Our teachers will reflect the principles of:

**AWHINA**  
Students will be included as part of their class and the school as a whole.

**AKO**  
Learning is an active process shared by adults and students.

**WHANAUNGATANGA**  
Parents and whanau are central to student progress and achievement.

### OUR GRADUATES

When students leave Kilbirnie School at the end of Year 6, they will be:

- Curious and engaged participants, contributors and leaders.
- Creative, innovative and critical thinkers who communicate effectively.
- Independent self-managers who set goals, self assess and reflect.
- Happy at school with a strong sense of inclusion and belonging.
- Literate, numerate and keen participants in physical activity.
- Confident, resilient and willing to take risks.
- Respectful of others and aware of tikanga Māori.
- Skilled users of technologies and discerning consumers of information.
- Aware of the environment and eager to protect it.



- **BETTER START LITERACY APPROACH (BSLA).**

This year Kilbirnie School is implementing the Better Start Literacy Approach in the Ngake and Whātaïtai Hubs. This is an evidence based structured literacy approach and has been developed over the last 10 years by researchers at the University of Canterbury, endorsed and funded by the Ministry of Education. Our teachers are completing a postgraduate micro-credential to support the implementation of this approach. Our whānau evening earlier in the term was well attended. We hope to make the Zoom recording available once this is provided to us. For more information on the Better Start Literacy Approach, visit the website: [www.betterstartapproach.com](http://www.betterstartapproach.com).

- **ZERO WASTE PROGRAMME AT OUR SCHOOL.**

Throughout this week the Whātaïtai and Ngake students participated in the Zero Waste programme. I had the pleasure of a conversation in the playground with some junior students who were independently picking up rubbish. I was informed that the material was not able to break down!



**"If there's arrows with a number in the middle like 1, 2, or 5 it means it can be recycled." Max**

**"Metal is not meant to be squished"- Ushnik**

**"Different things go in different bins otherwise they all go to the dump and we want them to go to the recycle place" - Preston and Samanthi**

**"Glass bottles have to go in the green bin and they have their very own truck"- Juno**

**"Rubbiush can be reused to make toys"- Caroline**

**"Worms eat compost. Tiger worms can eat cardboard because it's made from trees"- Lukas and Penina**

**"It has to grow from a plant to be compost. Citrus fruits are not good for worms because they are sour" Harper and Rikka.**





- **WHAEA RACHEL'S MAHI.**

This year Rachel France has stepped away from work as a full-time homeroom teacher and is working with us on Tuesdays and Thursdays only. Rachel works in the Ngake hub on Tuesdays. On Thursdays she currently works in all other rooms to support the work of teachers by delivering a specialist programme in te reo Māori. Her afternoon programmes include ukulele with the students in the Whātaimai hub and kapa haka with Matairangi students. Rachel has also started a programme of personal study toward achieving a Masters in musical Therapy qualification through Victoria University. Great stuff Rach!



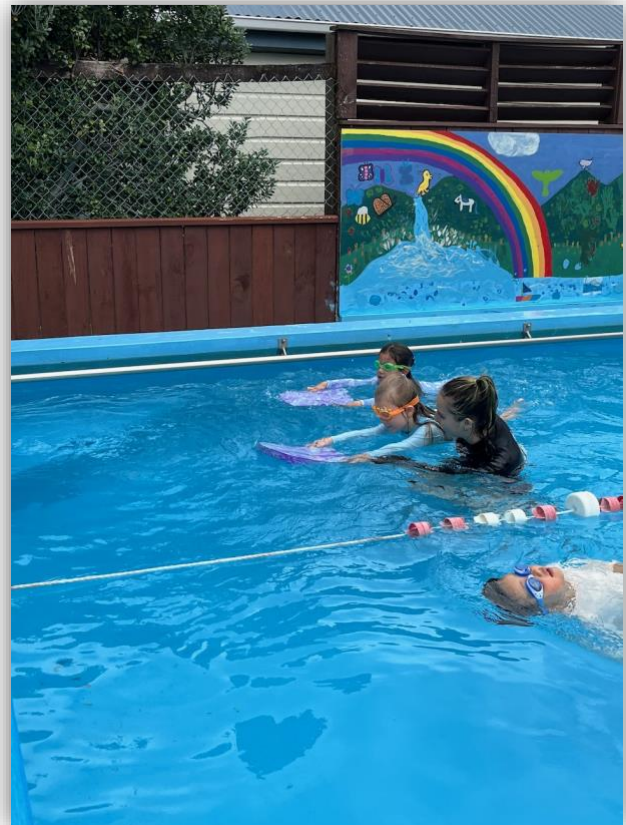




- **NGAKE HUB SWIMMING LESSONS.**

Our year 1-3 students have now completed their swimming programme. We would like to acknowledge the Little Markos swim school once again for their support and the quality of their programmes. Junior swimming in our school pool allows us to have consecutive lessons while avoiding the time lost getting younger students to and from the aquatic center in Kilbirnie.

Matairangi students start their aquatic programme at Kilbirnie in the first week of next term.





EST. 1884  
**KILBIRNIE SCHOOL**  
Whāia te iti kahurangi

- **GARDEN TO TABLE.**

Garden to Table is an exciting, integrated programme that helps children understand how to grow, harvest, prepare and share good, healthy food. The programme builds skills for life practical, hands-on activities. Students learn gardening and cooking skills while building awareness of the environment and the need to protect it. Absolutely consistent with the Kilbirnie School graduate profile and what we want for our students!

GTT operates on Monday mornings 9-10.30am. We have two incredible specialist teachers, Sacha and Bec, who have made the programme come to life for us. Our intention is to provide GTT learning and teaching across the Whāitaitai Hub every year, we intend to enhance the programme by incorporating facilities for GTT in future property developments in that area of the school.

**I am keen to hear from anyone in our school community who would like to discuss sponsorship for GTT. In the past local businesses have contributed. Email or come in and see me.**







EST. 1884  
**KILBIRNIE SCHOOL**  
Whāia te iti kahurangi

- **WHĀTAITAI BUILDING REPLACEMENT - UPDATE.**

I enjoyed talking to the students about the new building at assembly last week. Our project is about to move out of the ground as piles are concreted today. We have had some interesting conversations with students about the steps involved to construct a building. I encourage whānau to check on the curiosity of your child in this regard and make a point of having regular conversation at home should there be interest.



- **CUP OF TEA WITH TONY.**

On Friday mornings I set aside time to meet and chat informally with parents and whānau of our school over a cup of tea or coffee. No appointment necessary and I will make the tea! If you have any questions or interests about the work of our school or education in general, please do come to reception after the 9.00am bell. Pre-schoolers are also most welcome.





## • NEWS FROM OUR COMMUNITY.

### Marrzipan Drama

Is it a bird? Is it a plane? No. It's a Marrzipan kid dressed as a bird-plane for their upcoming play! Marrzipan is at Kilbirnie school and we would love to have you come and try it out!

Come see all the craziness and fun as we run 9 drama-based self-confidence lessons a term.

Marrzipan is full of games, a wacky play, and an even wackier Joshuwawa!

\*Free Trial Lesson. For more information please contact Joshuwawa at:

[Josh@MarrzipanDrama.co.nz](mailto:Josh@MarrzipanDrama.co.nz) or visit [www.marrzipandrama.co.nz](http://www.marrzipandrama.co.nz)

### Hataitai Community House Administrator Position Available

We need an organised and motivated individual who will be managing the administrative activities of the Hataitai Community House and Hataitai Centre. This is a 15 hours/week role, which is focused on supporting the Hataitai Community House Coordinator to develop community engagement and to ensure the smooth operation of the two community buildings. This role will be the main point of contact for booking the venues for hire. This is a perfect role for someone who likes to see tasks through to completion and can self-manage.

Applications open until 1 March 2023. For more information and to apply, please see

<https://www.seek.co.nz/job/60828624>

## KIDS COOKING CLASSES



WITH SARAH HALEWOOD

Perfect for kids age 10 to 14

Send your child off to become a Junior Masterchef these April school holidays. In the morning sessions, we'll bake treats perfect for an afternoon tea feast. During the afternoon sessions, we'll prepare a delicious dinner and dessert for the whole family. No matter which session your child chooses, they'll walk away with a meal for 4 people and skills for a lifetime.

### DATES/TIMES

Wednesday 19th, Thursday 20th, Friday 21st

Morning Baking Session: 10am - 1pm **\$85**

Afternoon Full Meal Session: 2pm - 5pm **\$125**

Full Day (Includes lunch from Prefab): 10am - 5pm **\$225**

### WHERE

Prefab Hall - 14 Jessie Street Te Aro

### TO BOOK EMAIL

[sarahhalewood8@gmail.com](mailto:sarahhalewood8@gmail.com)



## MENUS



### WEDNESDAY 19TH

#### Morning Baking Session:

Homemade Donuts  
Kransky sausage rolls  
Vanilla biscuits

#### Afternoon Full Meal Session:

**Main:** Herby beef meatballs with homemade tzatziki, garlic potatoes, green salad and flatbread

**Dessert:** Apple and cinnamon cake

### FRIDAY 21ST

#### Morning Baking Session:

Cupcakes  
Cheese straws  
Cinnamon and orange scrolls

#### Afternoon Full Meal Session:

**Main:** Handmade pasta with bolognese sauce, homemade garlic, green salad

**Dessert:** Chocolate tiramisu

### THURSDAY 20TH

#### Morning Baking Session:

Chocolate brioche buns  
Cheese scones  
Gingerbread biscuits

#### Afternoon Full Meal Session:

**Main:** Homemade dumplings with pickled vegetables, sauteed bok choy and steamed rice

**Dessert:** Sticky date pudding

NOTE: VEGETARIAN OPTIONS CAN BE  
ARRANGED UPON REQUEST

### PRICES

Morning Baking Session: \$85

Afternoon Full Meal Session: \$125

Full Day: \$225

### TO BOOK EMAIL

[sarahhalewood8@gmail.com](mailto:sarahhalewood8@gmail.com)

**GIVE RUGBY A TRY!**  
SEASON STARTS 28 APRIL

- ✓ Make friends
- ✓ Have fun
- ✓ Build confidence
- ✓ Be healthy



Find out more about Marist St Pats junior rugby  
[msprugby.co.nz/juniors](http://msprugby.co.nz/juniors) or email [mspjuniorrugby@gmail.com](mailto:mspjuniorrugby@gmail.com)

# AFTER SCHOOL JUNIOR SQUASH @ ISLAND BAY

**FREE FOR ANY  
JUNIOR MEMBER**  
12 MONTH JUNIOR MEMBERSHIP: \$95  
2 x Free trial sessions for non members

**FUN, COACHING, EWEWEAR,  
RACQUETS & BALLS PROVIDED.  
NO EXPERIENCE NEEDED!**

[ISLANDBAYTSC.ORG.NZ](http://ISLANDBAYTSC.ORG.NZ)



To sign your child up or  
for further info please contact

**Matt Yeo**  
[matty76@yahoo.com](mailto:matty76@yahoo.com)  
027 708 0976



**FRIDAYS**

3.30 - 4.30PM

AGES 5 - 12 Y/O

**STARTS 10TH MARCH**



## AXEMEN JUNIOR CLUB

**A CLUB FOCUSED ON  
NURTURING FRIENDSHIPS,  
DEVELOPING SKILLS &  
HAVING FUN!!**



**JUNIOR REGISTRATION  
THURSDAY 30TH MARCH,  
5.00-6.00PM WELLINGTON  
FOOTBALL CLUB ROOMS,  
HATAITAI PARK**

**FOR MORE INFORMATION OR JOIN NOW  
[WWW.WELLINGTONFOOTBALLCLUB.ORG.NZ](http://WWW.WELLINGTONFOOTBALLCLUB.ORG.NZ)**



# Wellington University Coastal Ecology Lab

## ANNUAL OPEN DAY Saturday 11 March 10am-3pm



- 🔗 Interactive displays showcasing **marine biology research** at VUW
- 🔗 Touch tanks of marine creatures
- 🔗 Our virtual reality diving experience
- 🔗 And much more...including a sausage sizzle

Bring the family for a fun and educational day to celebrate NZ Sea Week!



### *Music Holiday Programmes*

*Are you looking for a holiday programme that is suited to creative and musical children? Busking trips to build their confidence, rock band school, songwriting sessions to unlock their creativity and lots of fun activities. Perfect for singers, guitarists and keyboard players. Beginners to advanced. Contact us today. [geoff@therockacademy.co.nz](mailto:geoff@therockacademy.co.nz) or 021 565 750.*

*April 2023. From Mon the 17th to Fri the 21st. 8:45 am until 3:30 pm.*



### **Miramar Rangers AFC 2023 Football Season**

Miramar Rangers has a proud and rich football history of 116 years in the Eastern Suburbs. Are you interested in playing junior football this coming season? Registrations remain open for most grades.

We cater for boys and girls of all abilities in the following junior age groups:

- 🔗 First Kicks 4-6 year olds – those born 2017 or earlier
- 🔗 Junior and Youth Grades U7-U15 Grades – those born 2016-2008
- 🔗 Girls Sunday Leagues U7-U14 Grades

To register please use the following link - <http://miramarrangers.co.nz/registration-1/>

For further information and details on how to register please either see our website [www.miramarrangers.co.nz/juniors](http://www.miramarrangers.co.nz/juniors) or contact our administrator Rosie Telford – [secretary@miramarrangers.co.nz](mailto:secretary@miramarrangers.co.nz)





# HATAITAI MARCH MARKET

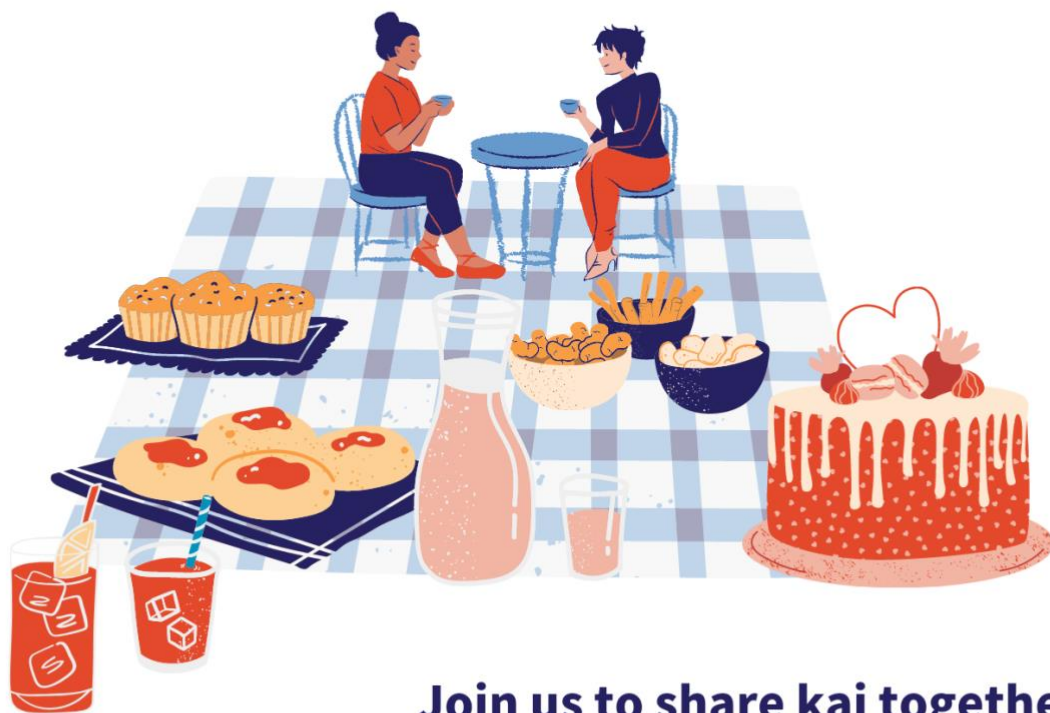
10AM-3PM

**SATURDAY  
18<sup>TH</sup> MARCH**

HATAITAI CENTRE | 157 HATAITAI ROAD



# HATAITAI COMMUNITY PICNIC



**Join us to share kai together  
and harvest vegetables from the  
Community Garden**

**Sunday 19 March 2023**

**11.30am - 1.30pm**

**NEIGHBOURS  
AOTEAROA**

Free children's crafts, games and activities.  
BYO Picnic, Baking provided

Email [events@hataitai.org.nz](mailto:events@hataitai.org.nz) for more information

Follow the the clues and find  
the treasure!

# Children's Treasure Hunt



**Hataitai Community House  
Waipapa Reserve Playground**

112 Waipapa Road, Hataitai

**March 26  
2 pm - 3 pm**

First place prize!  
Free lollipops for participating.